



**flotex**<sup>®</sup> BY STARCK<sup>®</sup>  
vortex | artist | twilight



\*Gürültü Çıkışı Erişilebilir Zemin Kaplama Çözümleri\*

creating better environments

**Forbo**

FLOORING SYSTEMS



## FLOTEX, THE HIGH TECH TEXTILE FLOORING

Flotex is a high tech textile that combines the warmth, acoustic properties and underfoot comfort of a textile with the durability and cleanability of a resilient floor covering.

### DURABLE & COMFORTABLE

- Densely placed fibres (over 70 million per m2) provide a warm and comfortable surface
- Wide range of designs provide a pleasing floor covering for any environment or desired atmosphere
- Excellent sound absorption (class A, > 20dB impact sound reduction)

### HYGIENIC & WASHABLE

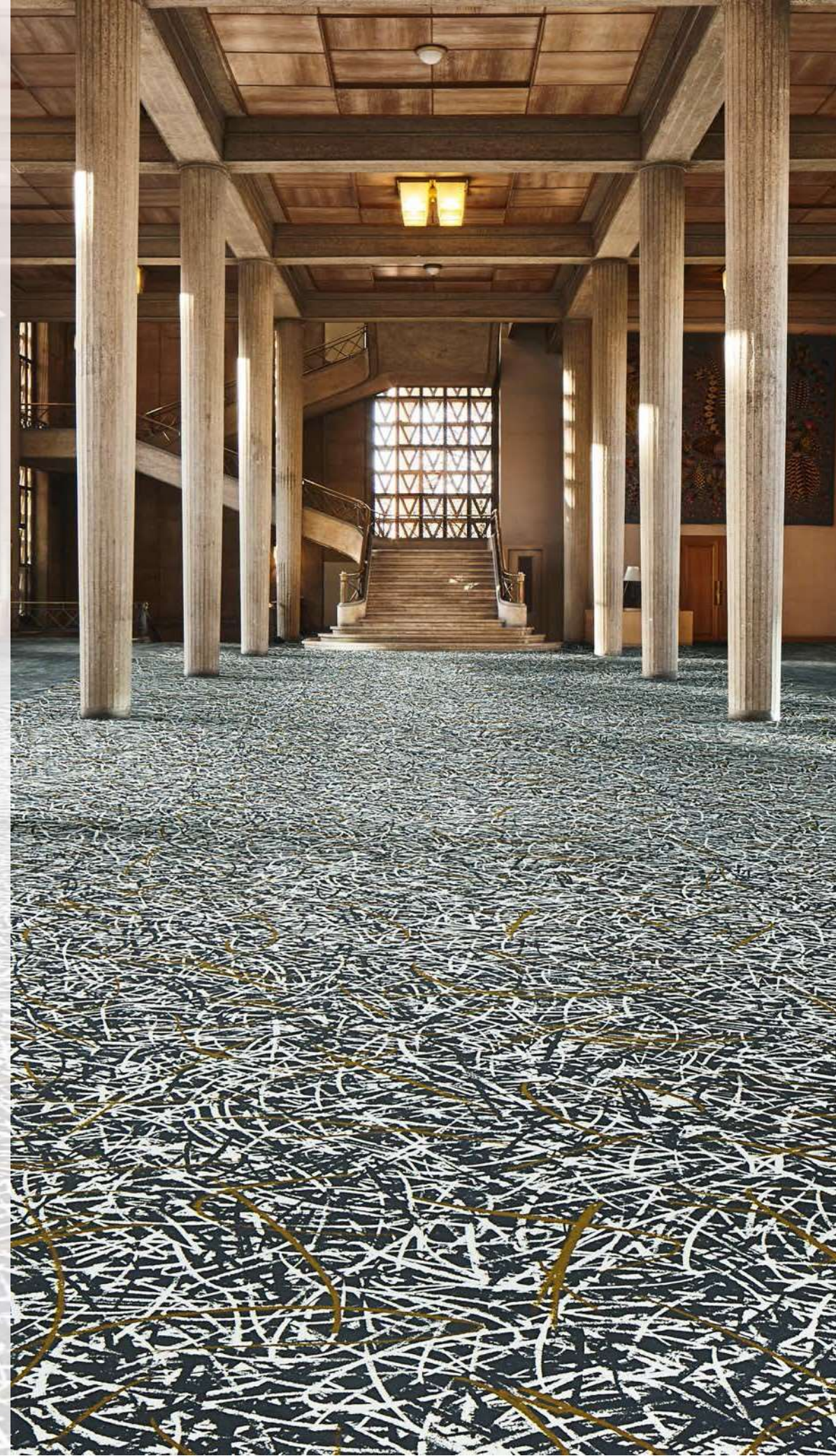
- The nylon 6.6. fibers are indestructible so intense cleaning can be done.
- The fibres capture fine dust so ideal for people with allergy. While cleaning dust is easy released.
- Flotex is a textile that prevents mould and odours due to its technical properties and bacteriostatic qualities

### SAFE & SOUND

- Provides comfort and is easy to walk on preventing any tripping hazards
- The unique construction and the warm feeling will guarantee a life long performance of the floor.



\*Girişten Çıkışa Esnek Zemin Kaplama Çözümleri\*



**flotex**<sup>®</sup> BY STARCK<sup>®</sup>

## Technical specifications

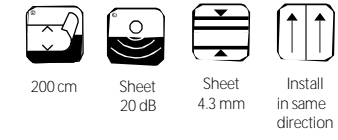
FLOTEX BY STARCK meets the requirements of EN 1307

		FLOTEX BY STARCK	
H	Total thickness	ISO 1765	4.3 mm
	Commercial use	EN-ISO 10874	Class 33 heavy
9	Roll width		2.0 m
	Roll length		30 m
2	Total weight	ISO 8543	1.8 kg/m <sup>2</sup>
	Dimension stability	ISO 2551	< 0.2%
t	Abrasion resistance	EN 1307 annex F	> 1000 cycles
	Castor chair continuous use	EN 985 Test A	r ≥ 2.4 continuous use
w	Light fastness	EN-ISO 105-B02	≥ 6
	Slip resistance	UK SRG pendulum	Dry - very low slip risk Wet - low slip risk
Acoust		EN-ISO 717-2 ISO 354	Impact sound ΔLw = 20 dB Sound absorption = 0.10
	b	Water impermeability	EN 1307 annex G Pass
Creating better environments	Renewable electricity		Flotex is manufactured using 100% electricity made from renewable sources
	Recycled content		Flotex sheet contains up to 20% recycled content by weight
Indoor air quality			Flotex is approved by Allergy UK. All Flotex products are tested for indoor air emissions in accordance with ISO 16000-9 after 3 days and 28 days.
	LCA		LCA is the foundation for securing the lowest environmental impact
Flotex meets the requirements of EN 14041			
R	Reaction to fire	EN 13501-1	B <sub>1</sub> -s1
	Slip resistance	EN 13893	DS: ≥ 0.30
E	Thermal resistance	ISO 8302	0.048 m <sup>2</sup> K/W
	Bdy voltage	ISO 6356	< 2kV

All Forbo Flooring Systems' sales organisations worldwide have a certified Quality Management System in accordance with ISO 9001. All Forbo Flooring Systems' manufacturing operations have a certified Environmental Management System in accordance with ISO 14001. The Life Cycle Assessment (LCA) of Forbo Flooring Systems' products is documented in individual Environmental Product Declarations (EPD's) which can be found on all of our websites.

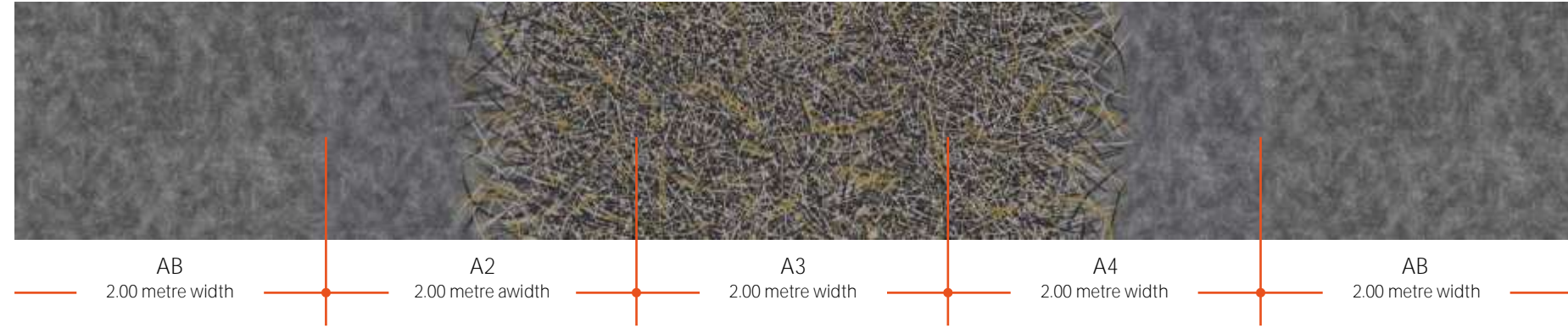
creating better environments





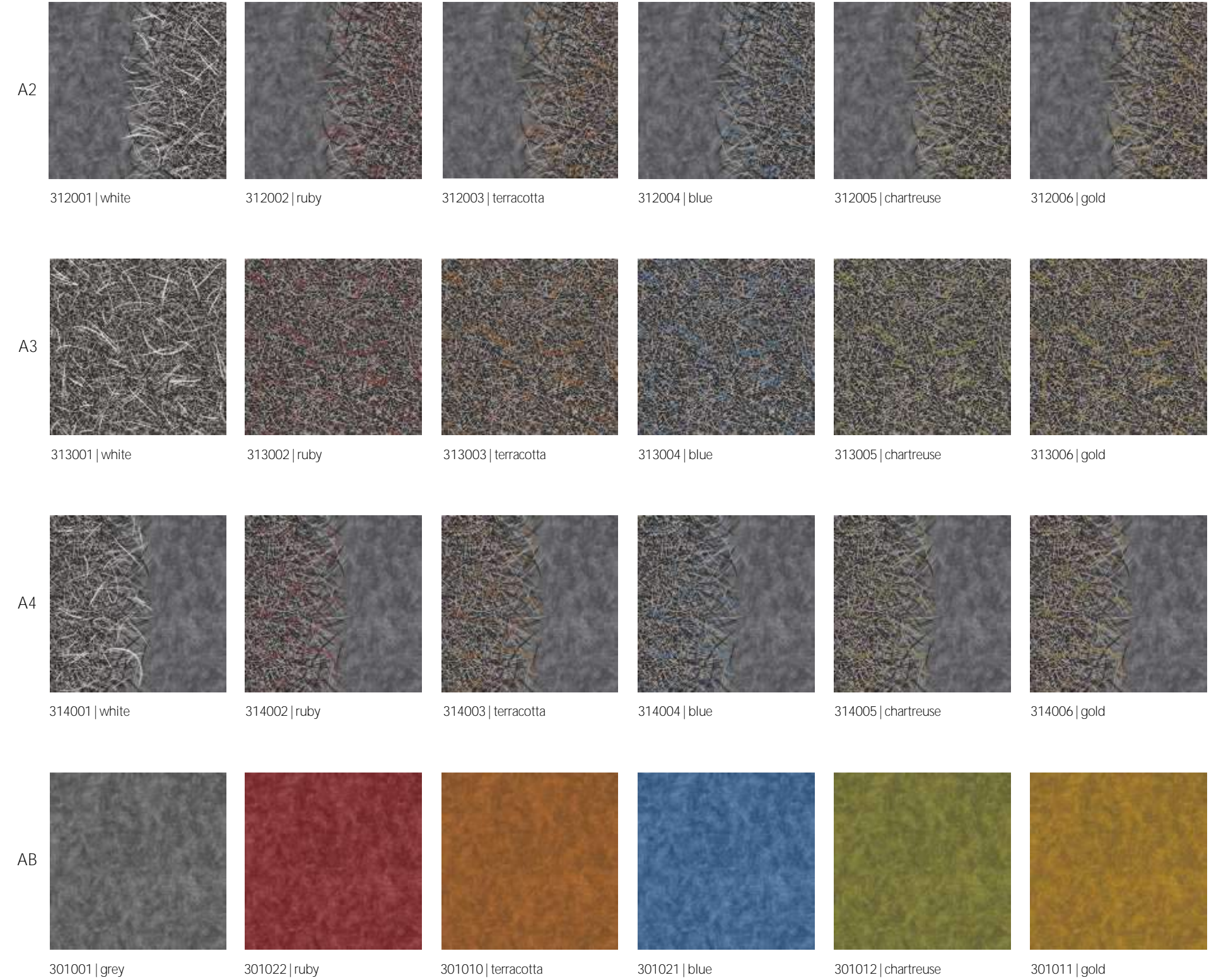
REPEAT 200 X 200 CM  
 RAPPORT 200 X 200 CM  
 DESSIN 200 X 200 CM

vortex

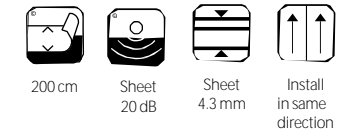


gold

vortex

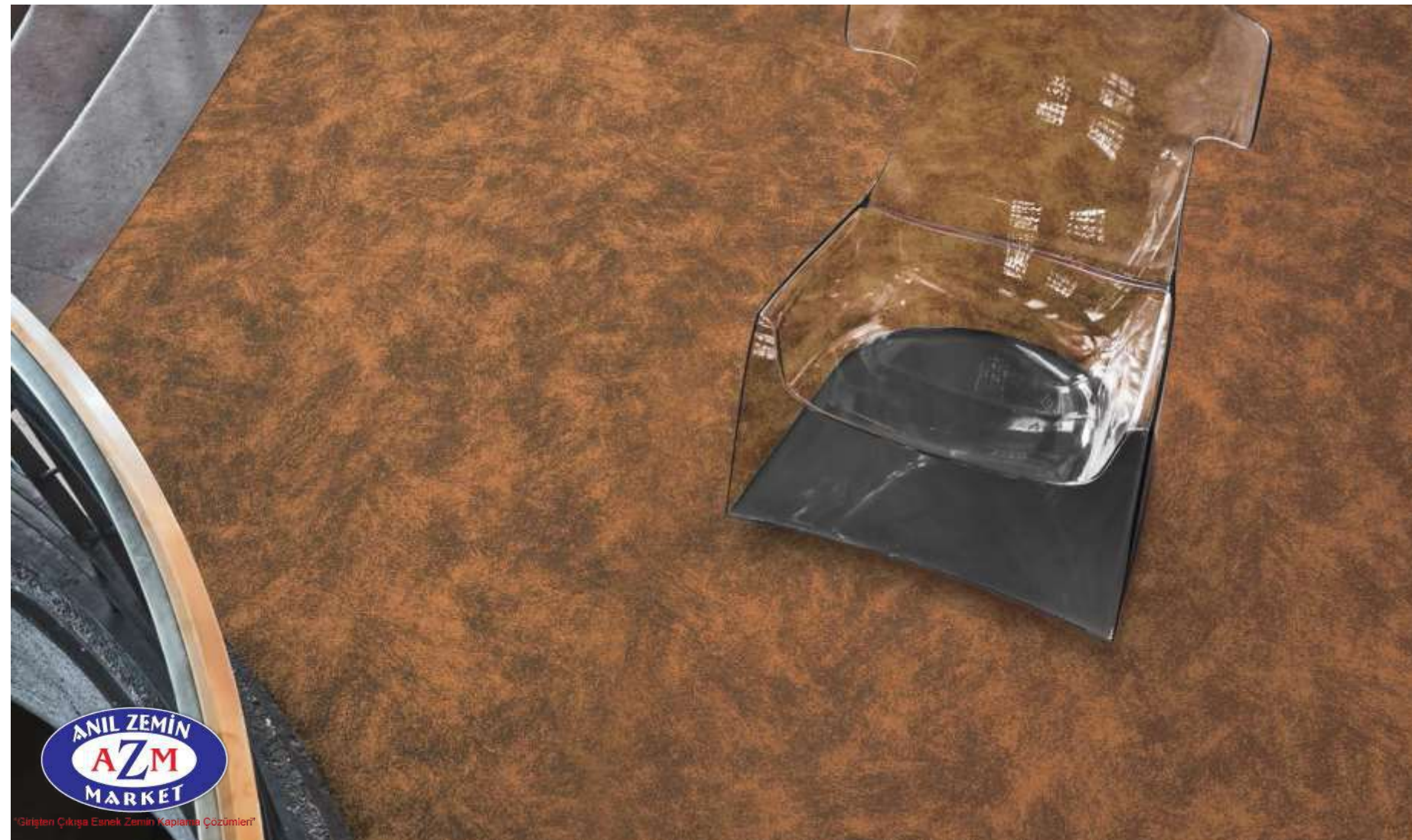






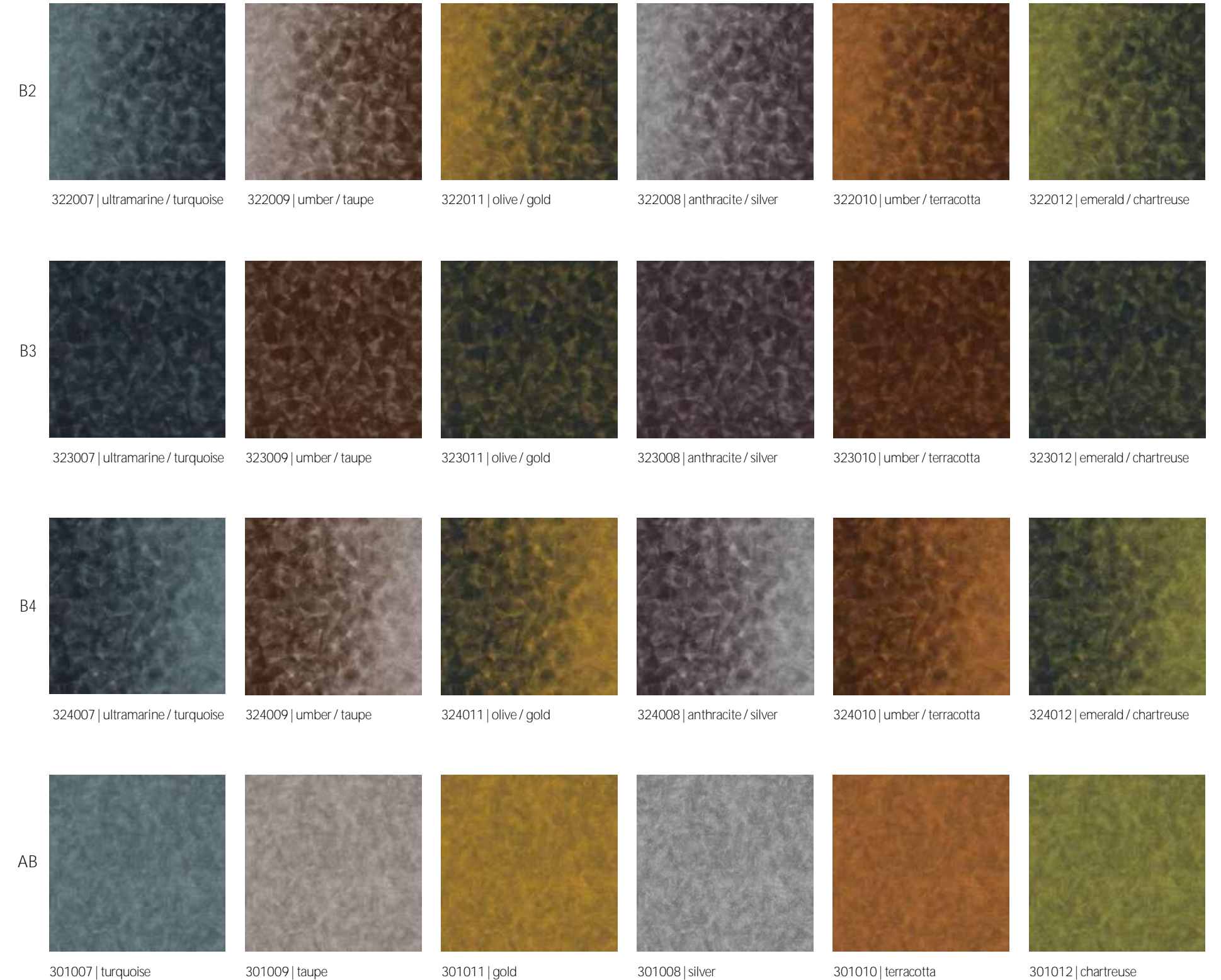
Repeat 200 x 200 cm  
 Rapport 200 x 200 cm  
 Dessin 200 x 200 cm

artist

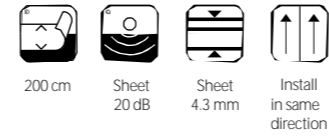


terracotta

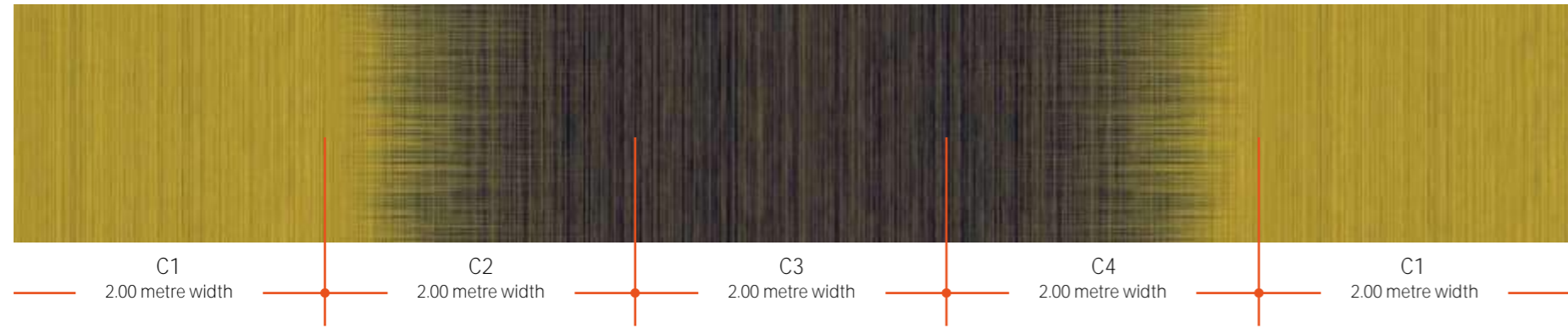
artist







twilight



antique / amber

twilight

C2								
	332013   pewter / steel	332019   umber / taupe	332015   umber / spice	332020   burgundy / ruby	332017   sapphire / titan blue	332014   sapphire / teal	332018   emerald / chartreuse	332016   antique / amber
C3								
	333013   pewter	333019   umber	333015   umber	333020   burgundy	333017   sapphire	333014   sapphire	333018   emerald	333016   antique
C4								
	334013   pewter / steel	334019   umber / taupe	334015   umber spice	334020   burgundy / ruby	334017   sapphire / titan blue	334014   sapphire / teal	334018   emerald / chartreuse	334016   antique / amber
C1								
	331013   steel	331019   taupe	331015   spice	331020   ruby	331017   titan blue	331014   teal	331018   chartreuse	331016   amber