

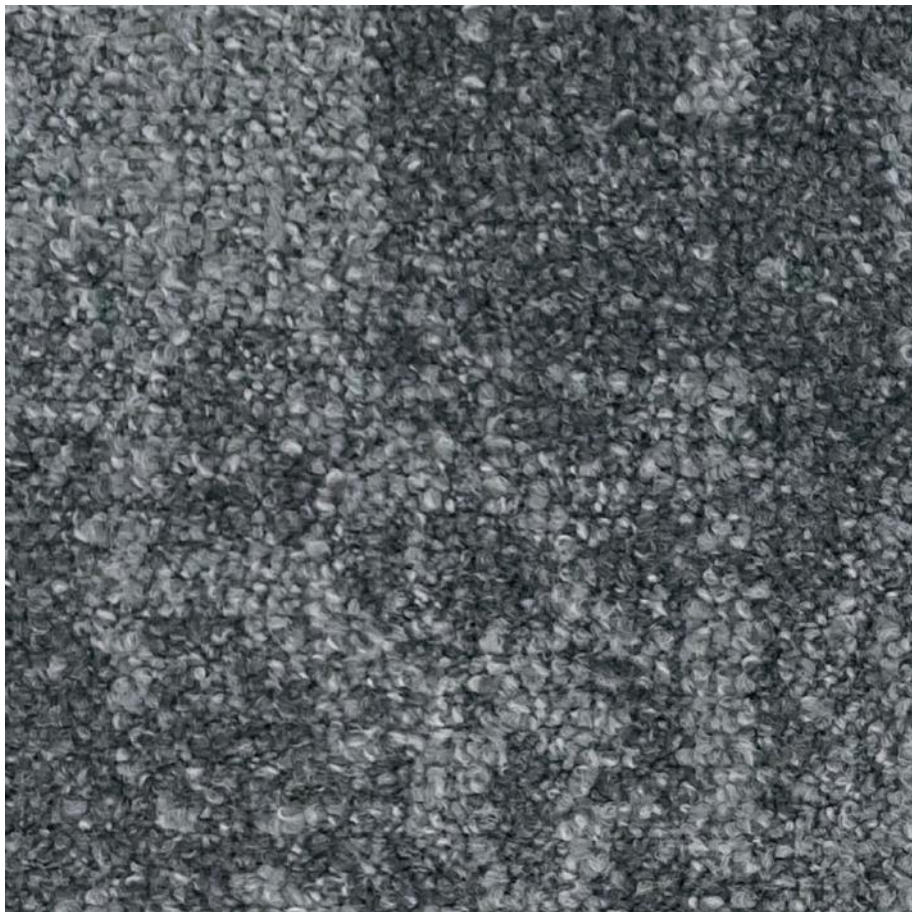


Textile Carpet Tiles

tessera[®] infused

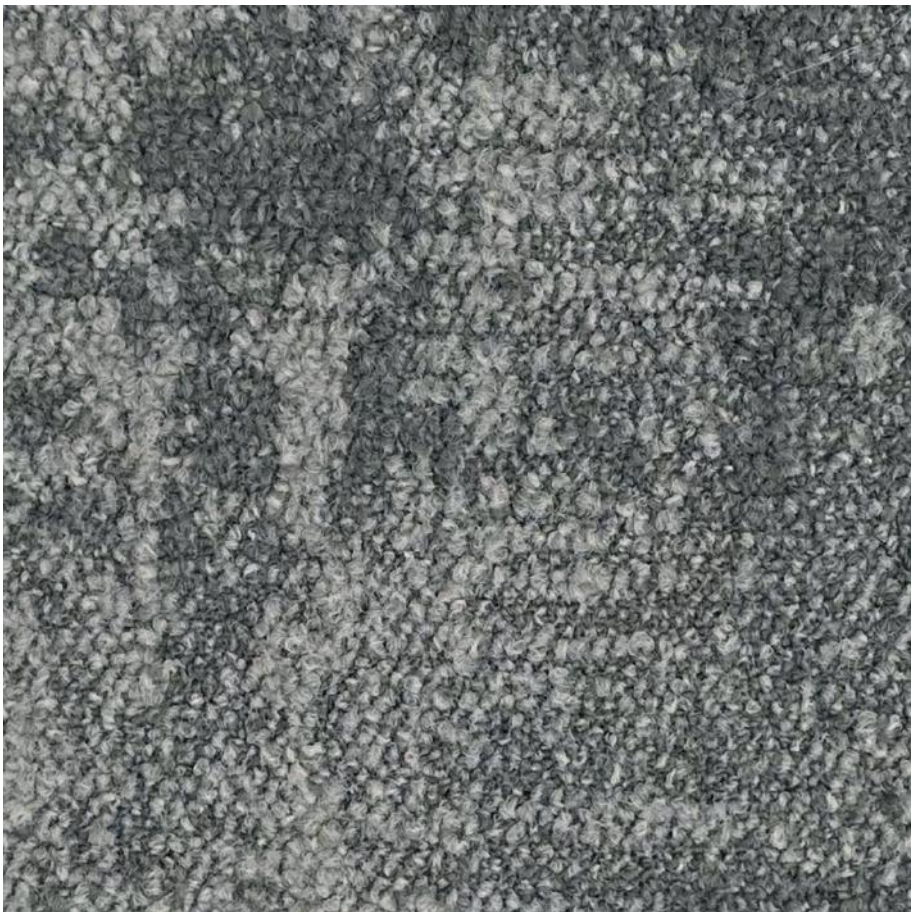


creating better environments



4500 | magic mood

LRV 15



4501 | morning cloud

LRV 19



4502 | noir flame

LRV 8



4503 | enduring storm

LRV 8



4504 | linen ruffle

LRV 25



4505 | coral dream

LRV 25



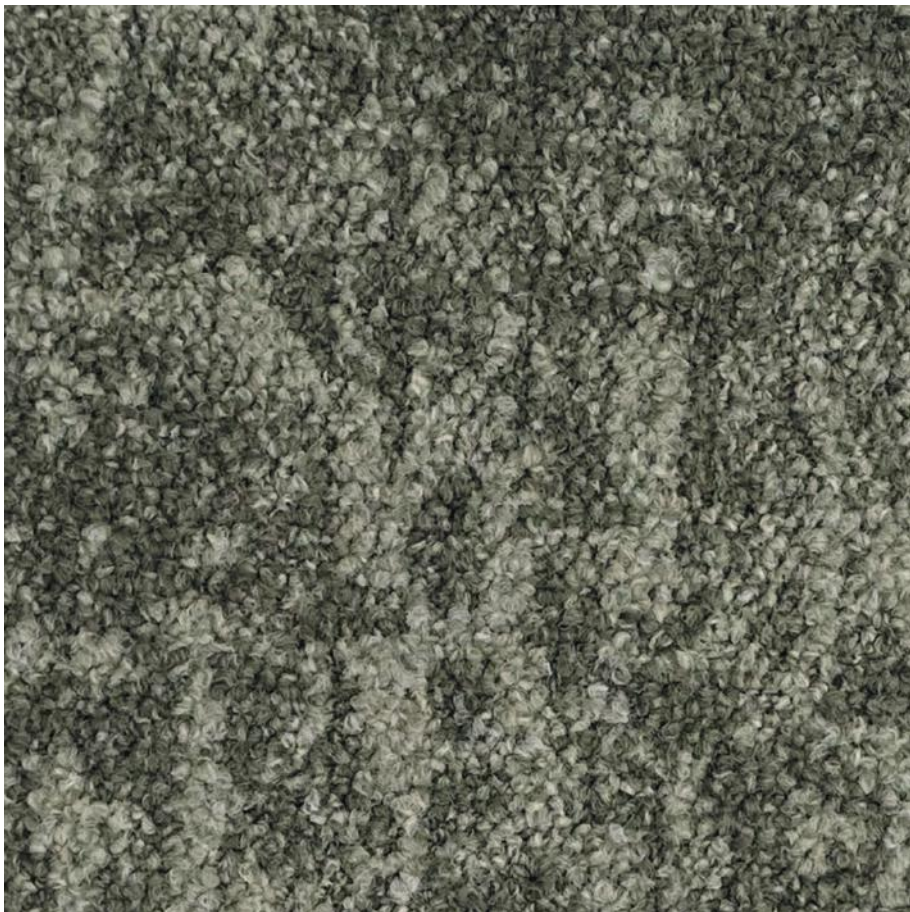
4506 | coffee cream

LRV 13



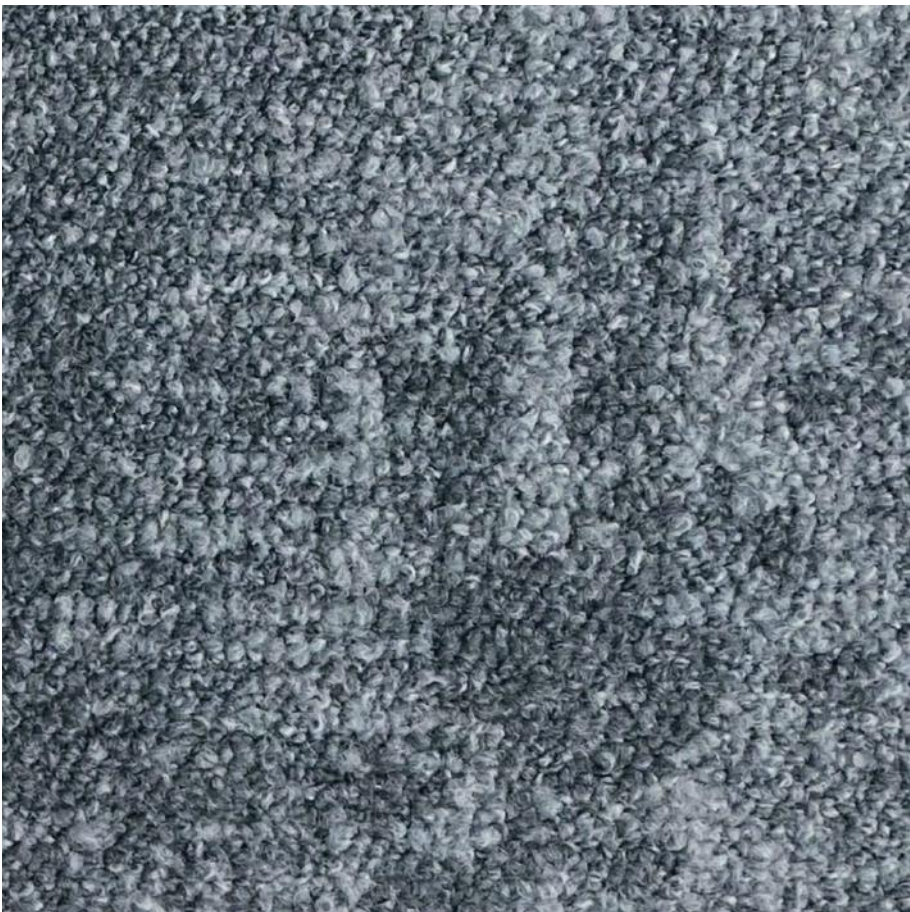
4507 | pickled spice

LRV 14



4508 | whimsy wood

LRV 21



4509 | silver feather

LRV 20



4510 | wistful walk

LRV 14



4511 | idyllic air

LRV 8

Technical specifications

Infused carpet tiles meet the requirements of EN 1307

	Description	Tufted multi-pile height loop carpet tile	
	Tile size	EN 994	50 cm x 50 cm
	Total thickness	ISO 1765	6.7 mm
	Pile height	ISO 1766	3.6 mm
	Collection size	12	
	Packaging per carton tiles	16 (4 m²)	
	Commercial use	EN ISO 10874	Class 33
	Pile composition	100% polyamide 6	
	Dye method	100% solution dyed	
	Stitch density	ISO 1763	245,606 per m²
	Pile weight	ISO 8543	720 g/m²
	Total weight	ISO 8543	4260 g/m²
	Primary backing	Polyester	
	Secondary backing	ProBac™ modified bitumen and polyester fleece. Contains over 76% recycled content.	
	Alternative available secondary backing	SOFTbac®	
	Acoustical impact noise reduction	ISO 10140-3	26 dB
	Acoustical sound absorption	ISO 354	αw = 0.15 (H)
	Castor chair continuous use	ISO 4918	r ≥ 2.4
	Colour fastness to light	EN ISO 105-B02	≥ 5
	Dimensional stability	EN 986	≤ 0.2 %
	Indoor air emissions: TVOC after 28 days	EN 16516	≤ 0.1 mg/m³
	Creating Better Environments		
	Renewable Energy	All Tessera carpet tiles are manufactured using 100% renewable energy (electricity & biogas)	
	Recycled Content	Infused carpet tiles contain 60% recycled content by weight	
	Indoor Air Quality	Infused carpet tiles comply to 01350 Indoor Air Quality Standard and achieve Indoor Air Comfort Gold standard	
	Back to the Floor	Installation off cuts can be collected via Back to the Floor	
	Ska Rating	Infused meets Ska Rating criteria for M12 soft floor coverings in office, retail and higher education schemes	
	Installation method	Monolithic, quarter turn or non-directional	

Infused carpet tiles meet the requirements of EN 14041:2004 and BS EN 14041:2004



	Product code	EN 14041	1170104-DoP-210
	Product code	BS EN 14041	1170104-DoP-GB210
	Reaction to fire	EN 13501-1	C _f -s1, G, NCS
	Slip resistance	EN 13893	μ ≥ 0.30
	Body voltage	ISO 6356	≤ 2.0 kV
	Thermal conductivity	EN 12667	0.06 W/mK



All Forbo Flooring Systems’ sales organisations and manufacturing sites worldwide have certified Quality Management Systems in accordance with ISO 9001. All Forbo Flooring Systems’ manufacturing plants have certified Environmental Management Systems in accordance with ISO 14001. Tessera Infused carpet tiles are manufactured in a facility certified to SA8000® and ISO 45001. The Life Cycle Assessment (LCA) of Forbo Flooring Systems’ products is documented in individual Environmental product declarations (EPD’s).

Colourway choice

As with any product, colour and design influence the appearance retention of the floor. The level and type of traffic should be considered as part of the process for selecting colourways. Light colours may not be suitable for heavy traffic areas.

Installation and maintenance

Shades may vary from batch to batch and should be checked before installation. Batches should not be mixed in the same location. All Tessera products are to be installed in full accordance with Forbo installation instructions and recognised trade standards.

Our recommended adhesive for our collection of Tessera carpet tiles is 542 Eurofix Tack Plus.

A well designed entrance flooring system will prevent dirt and moisture from being tracked into the building, prolonging the life of the carpet tiles, reducing cleaning, repair and overall maintenance costs. **Forbo Coral and Nuway entrance systems** can remove and retain up to 95% of all dirt and moisture entering a building. Please contact customer services for more information.

Regular power vacuuming is essential. Spills and surface stains can be removed by sponging with a damp cloth or, for more resistant stains, with a mild detergent solution. For full installation and cleaning and maintenance instructions please go to **www.forbo-flooring.co.uk**

Whilst Forbo Flooring UK Limited does its best to ensure that the contents of this samplebook are correct and accurate at the time of publication, to the fullest extent permitted by law, Forbo Flooring UK Limited makes no, and expressly disclaims all, guarantees of any kind, expressed or implied in respect of the information, content, materials or products displayed in this samplebook and does not represent that the information is accurate, complete or current and you are advised to visit our website at **www.forbo-flooring.co.uk** for up-to-date details or corrections to such contents.

UK

Forbo Flooring UK Limited
High Holborn Road, Ripley
Derbyshire DE5 3NT

London EC1 showroom

79 St John Street, Clerkenwell
London EC1M 4NR
Tel: 0207 553 9300

For commercial enquiries:

If calling from the North,
London & South East
Tel: 0800 0282 162

If calling from Scotland,
Midlands & South West
Tel: 0800 0935 258

Nuway enquiries:

Tel: 01773 740 688

Residential enquiries:

Tel: 0800 0935 846
Email: info.flooring.uk@forbo.com
www.forbo-flooring.co.uk

Ireland

Forbo Ireland Ltd
2 Deansgrange Business Park
Blackrock
Co Dublin
Tel: 00353 1 2898 898
Fax: 00353 1 2898 177
Email: info.ireland@forbo.com
www.forbo-flooring.ie

Other countries

Forbo Flooring B.V.
P.O. Box 13
1560 AA Krommenie
The Netherlands
Tel: +31 75 647 74 77
Email: contact@forbo.com
www.forbo-flooring.com

Samples:

Tel: 0800 731 2369
email: samples.uk@forbo.com

Registered office:

Forbo Flooring UK Limited
High Holborn Road
Ripley
Derbyshire
DE5 3NT
Registered in England: 9200318



FLOORING SYSTEMS

creating better environments

Find us on

