

**Flexible Flooring Solutions from Entry to Exit**



**Office - Showroom**

T: +90 212 274 44 22 | +90 212 274 42 89 | +90 212 274 42 90 E: info@anilzemin.com | bilgi@anilzemin.com | www.anilzemin.com A: Vadi  
İstanbul Bulvar 2A Ofis | Ayazağa Mah. Cendere Cad. No: 109 / I Daire: 15-16 Sarıyer / İstanbul

**logistics 1**

T: +90 212 229 44 38 | E: info@anilzemin.com | bilgi@anilzemin.com | www.anilzemin.com A: Poligon  
Mah. Sevim Sok. No:10/B İstinye / Sarıyer / İstanbul

**logistics 2**

Hellmann Worldwide Logistics

**Samples:**

Tel: 0212 274 44 22

E-mail: info@anilzemin.com

**Find us on @anilzemin**





## FI Ocked FI OOrinG IN SHEET, TILE AND PLANK

Flotex flocked flooring combines the warmth, acoustic and underfoot comfort properties of a carpet with the durability and – easy-to-clean benefits of a resilient floor covering. It also offers slip resistance in wet and dry conditions as well as being the only textile to achieve Allergy UK's prestigious Seal of Approval™.



# Fl Ote X COLLECTION AT A GLANCE

## flotex® colour

Four versatile and fresh designs make up the Flotex Colour collection: Metro, Calgary, Penang and Canyon. Together they offer a range of 90 unique colourways, all available in sheet and tile and all complemented by 22 borders.



## flotex® linear

This collection presents a comprehensive choice of five linear designs in various colourways that complement commercial and educational environments, as well as delivering playful effects for leisure & hospitality, education or office environments.



## flotex® planks

The performance attributes of Flotex along with the design versatility of the Plank collection, make these modular floor coverings ideal for use in workspaces as well as high traffic areas such as universities, hotels, gyms and busy offices.







# the Art of Flocking

Like a timeless work of art, Flotex flocked floor coverings are an excellent investment with a unique blend of qualities that will complement any project. Flotex will also retain its superior aesthetics for years to come. Choose from an array of stunning designs in our Vision or designer collections, or create your own masterpiece using our bespoke service.

What will you do with the freedom? Creatively Flotex will enhance any interior whilst our precision-driven manufacturing process ensures high quality and performance.

Flotex. The Art of Flocking.



Flotex has a positive impact on the lives of allergy sufferers as daily vacuuming removes twice as many allergens compared to conventional carpets. That is why Flotex carries Allergy UK's Seal of Approval™.

Always flawless, so do your worst! Looking immaculate whatever comes its way, and designed to handle high traffic, Flotex flocked flooring really is a star performer.

With a 10 year guarantee, it's well suited to areas where durability and cleanability are essential. There's no need to decide between functionality or style, why not have both with Flotex? You'll be thanking your lucky stars you chose it!

Breathe easy in the knowledge you chose Flotex flocked flooring. With the prestigious Allergy UK Seal of Approval™, Flotex contributes to better indoor environments in which to live, work, learn and play.

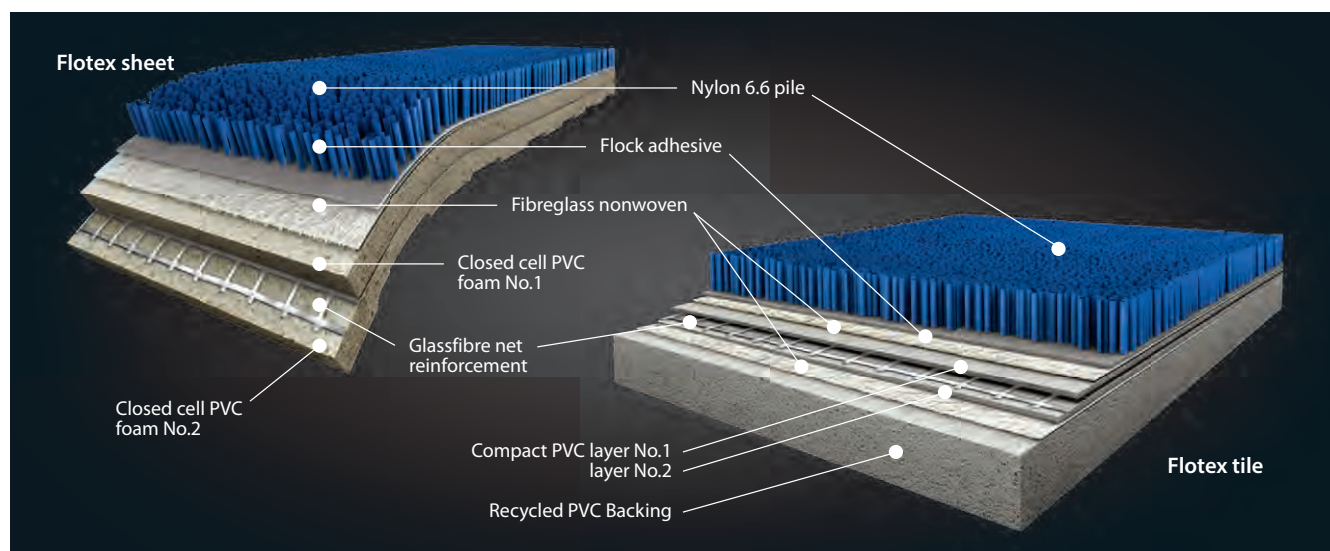
Slip resistant and offering up to 20dB impact sound reduction, Flotex really is a reassuringly safe and sound flooring solution. All Flotex ranges are phthalate free and our sheet ranges, Colour and Linear have undetectable levels of emissions.



## how does Flotex compare to other textile floor coverings?

	Flotex	Loop pile carpet tile	Cut pile carpet tile	Needlefelt sheet
Durability	● ● ● ●	● ● ●	●	● ●
Cleanability	● ● ● ●	●	●	●
Ease of installation (tile)	● ● ● ●	● ● ● ●	● ● ● ●	●
Hygienic and 'Allergy UK' approved	● ● ● ●	-	-	-
Impermeability (sheet)	● ● ● ●	-	-	-
Repairs to damage	● ● ●	● ● ● ●	● ●	-
Impact sound reduction	● ● ●	● ● ● ●	● ● ● ●	● ● ●
Underfoot comfort	● ●	● ● ●	● ● ● ●	●

# FI OteX



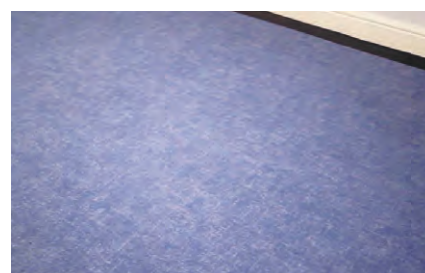
- Straight Nylon 6.6 fibres (flock) capture fine dust and allergens which are easily released when vacuumed
- Over 70 million fibres per m<sup>2</sup> deliver an extremely durable and slip resistant surface
- Cushioned backing provides comfort and acoustic performance
- Impervious backing makes Flotex suitable for mechanical wet cleaning
- Double strength glass fibre reinforcement results in excellent dimensional stability
- Flotex sheet contains up to 20% recycled content
- Flotex tile and plank contain up to 52% recycled content

## THANK FLOCK it's Flotex

**Flotex offers a completely different dimension in flooring as it combines all the hard wearing and durable characteristics of a resilient floor with the warmth and comfort of a textile floor covering. EN 1307, the European Standard which measures the performance of textile flooring, has recently annexed extra clauses to this standard to recognise that flocked floor coverings differ from textile flooring.**

### en1307 annexe F – abrasion resistance

In this new standard, the pile surface of the flocked flooring is rubbed back and forth 1,000 times with a 2cm wide pointed metal blade loaded with a 2kg weight. The aim of the test is to establish the durability of the flocked flooring. At least 50% of the pile must be retained at the end of the test for the product to meet the standard's requirement. We test Flotex for 1,500 cycles and we achieve a much higher result than 50% of pile remaining.









# Flotex COLLECTION AT A GLANCE

## flotex® colour

Four versatile and fresh designs make up the Flotex Colour collection: Metro, Calgary, Penang and Canyon (NEW).

Together they offer a range of 90 unique colourways, 13 of which are new for 2019. All are available in sheet and tile, with 36 references available in plank.

The range is also complemented by 22 borders.



48

## flotex® naturals

A special range of 9 flocked floor coverings that all deliver the appearance of a real wood floor. The range includes timber designs to suit everyone's needs and colour schemes, from beech and blackened oak to antique pine and european white wood.



54

## flotex® borders

With Flotex Borders you are able to make borders, creative features and delineators between colourways or even different designs. It is available in 22 different colourways in 11cm or 22cm widths and matches the base shades of the various Flotex Colour and Linear designs.



77



## flotex® colour metro

Metro is a versatile semi-plain floor design which covers a wide and modern colour bank. The understated pattern conveys texture without definite form, creating an authentic feel that is unique to Flotex flooring.



Flotex Colour Metro **s246005** | nimbus

## flotex® colour penang

Flotex Penang offers a stunning look for any modern environment. It creates a subtle linear effect and comes in a range of rich modern shades.



Flotex Colour Penang **s482005** | smoke

## flotex® colour calgary

Flotex Calgary offers a wide colour choice in a soft, natural design that works well in larger areas. The pattern can be easily combined with complementary Flotex or resilient ranges and is the perfect choice for application areas that require a muted ambience.



Flotex Colour Calgary **s290012** | cement

## flotex® colour canyon

*NEW* Flotex Canyon is a heavily grained semi-plain inspired by natural earth and rock. It has a distinctive strong texture with a medium contrast.



Flotex Colour Canyon **s445022** | limestone





canyon limestone  
s445022 t545022 p945022\* ●



calgary cement  
s290012 t590012 p990012\* ●



canyon stone  
s445021 t545021 p945021 ●



penang smoke  
s482005 t382005 ●



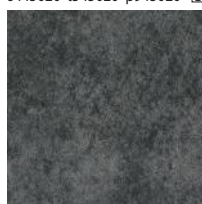
penang nimbus  
s482017 t382017 p982017\* ●



metro nimbus  
s246005 t546005 p946005\* ●



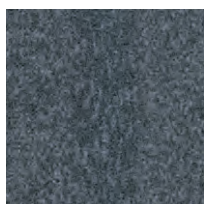
canyon pumice  
s445020 t545020 p945020\* ●



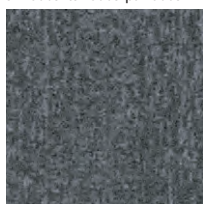
calgary grey  
s290002 t590002 p990002\* ●



penang grey  
s482037 t382037 p982037\* ●



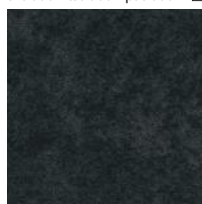
penang mercury  
s482004 t382004 p982004\* ●



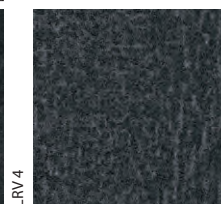
penang zinc  
s482007 t382007 p982007\* ●



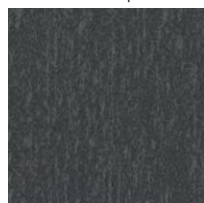
metro grey  
s246006 t546006 p946006\* ●



calgary ash  
s290010 t590010 p990010\* ●



penang ash  
s482031 t382031 p982031\* ●



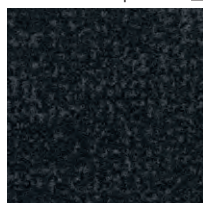
canyon slate  
s445019 t545019 p945019\* ●



metro ash  
s246007 t546007 p946007\* ●



penang anthracite  
s482001 t382001 ●



metro anthracite  
s246008 t546008 p946008\* ●

Description	Flocked flooring	
Dimensions	Sheet: Roll width 2m Roll length ≤ 30 lm Tile: 50cm x 50cm (3m² per box)	
Total thickness	ISO 1765	Sheet: 4.3mm Tile: 5.0mm Plank: 5.0mm
Slip resistance	Pendulum test	Wet – low slip risk
Collection size	45	
Application	EN 1307	Class 33
Impact sound reduction	EN ISO 717-2	Sheet: ΔLw = 20 dB Tile: ΔLw = 19 dB
CE	EN 14041	
Reaction to fire	EN 13501-1	B <sub>n</sub> -s1
Slip resistance	EN 13893	DS: ≥0.30
Body voltage	EN ISO 10965	< 2 kV

Sheet Tile

\*Available in 100 x 25cm planks.



#### Breea M ratings

**Flotex colour** – Flotex F50 tile with recycled backing (EN1307)

**Flotex colour** – Flotex F200 sheet with PVC backing (EN1307)

	Commercial	Education	Health	Domestic	Retail (Durability)	Retail (Fashion)	Meets Ska criteria
Tile	B	A	A	B	B	A+	✓
Sheet	A	A+	A+	A	A	A+	✓

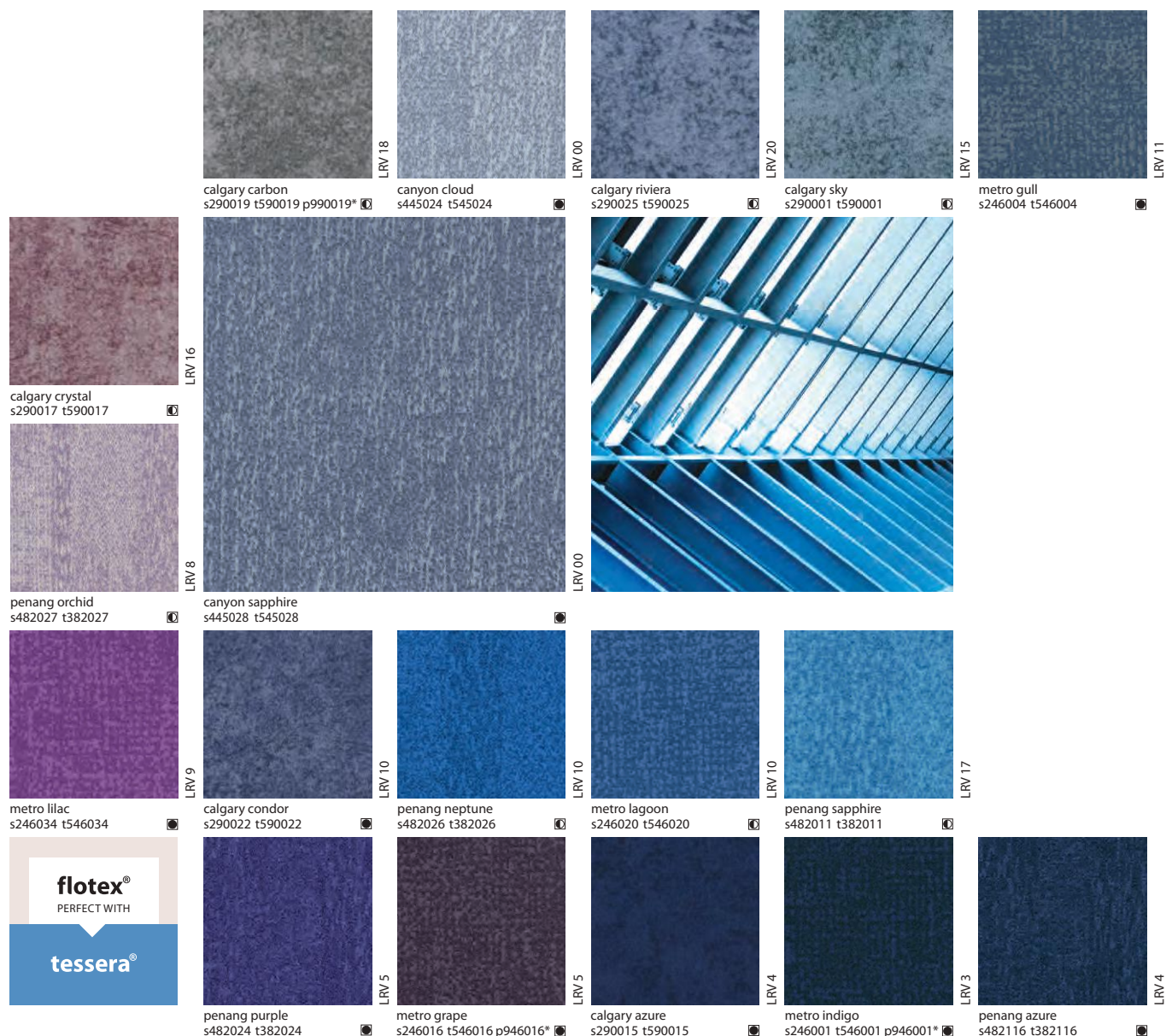


Sheet only

#### usage classification

- Superior appearance rating
- Good appearance rating
- Moderate appearance rating

s = Sheet t = Tile



## Breea M ratings

**Flotex colour** – Flotex F50 tile with recycled backing (EN1307)

**Flotex colour** – Flotex F200 sheet with PVC backing (EN1307)

	Commercial	Education	Health	Domestic	Retail (Durability)	Retail (Fashion)	Meets Ska criteria
Tile	B	A	A	B	B	A+	✓
Sheet	A	A+	A+	A	A	A+	✓

## usage classification

● Superior appearance rating    ● Good appearance rating    ○ Moderate appearance rating

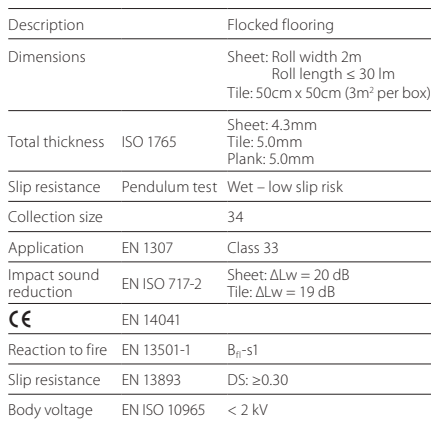
s = Sheet t = Tile

\*Available in 100 x 25cm planks.



Sheet only





\*Available in 100 x 25cm planks.



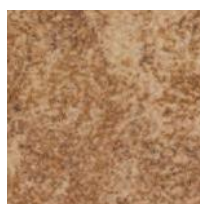
canyon sulphur  
s445030 t545030

LRV 00



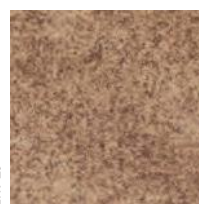
calgary saffron  
s290008 t590008

LRV 28



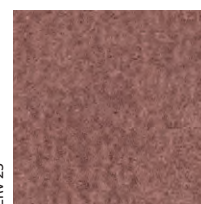
calgary sahara  
s290006 t590006

LRV 29



calgary suede  
s290007 t590007

LRV 23



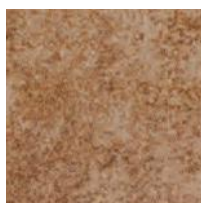
penang coral  
s482016 t382016

LRV 16



metro amber  
s246013 t546013

LRV 22



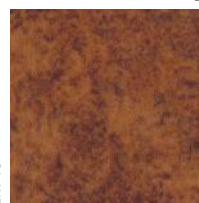
calgary caramel  
s290013 t590013

LRV 17



penang ginger  
s482019 t382019

LRV 18



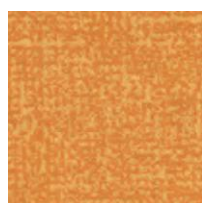
calgary melon  
s290005 t590005

LRV 10



canyon garnet  
s445026 t545026

LRV 00



metro gold  
s246036 t546036

LRV 29



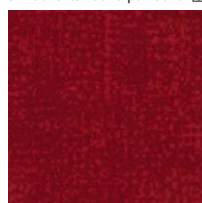
metro tangerine  
s246025 t546025 p946025

LRV 18



calgary fire  
s290024 t590024

LRV 11



metro red  
s246026 t546026 p946026\*

LRV 9



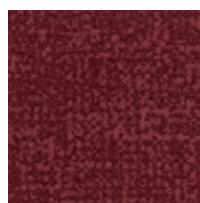
metro cherry  
s246031 t546031

LRV 6



metro pink  
s246035 t546035

LRV 7



metro berry  
s246017 t546017 p946017\*

LRV 5



metro burgundy  
s246027 t546027

LRV 2



## Breea M ratings

**Flotex colour** – Flotex F50 tile with recycled backing (EN1307)

**Flotex colour** – Flotex F200 sheet with PVC backing (EN1307)

	Commercial	Education	Health	Domestic	Retail (Durability)	Retail (Fashion)	Meets Ska criteria
Tile	B	A	A	B	B	A+	✓
Sheet	A	A+	A+	A	A	A+	✓

## usage classification

● Superior appearance rating    ● Good appearance rating    ○ Moderate appearance rating

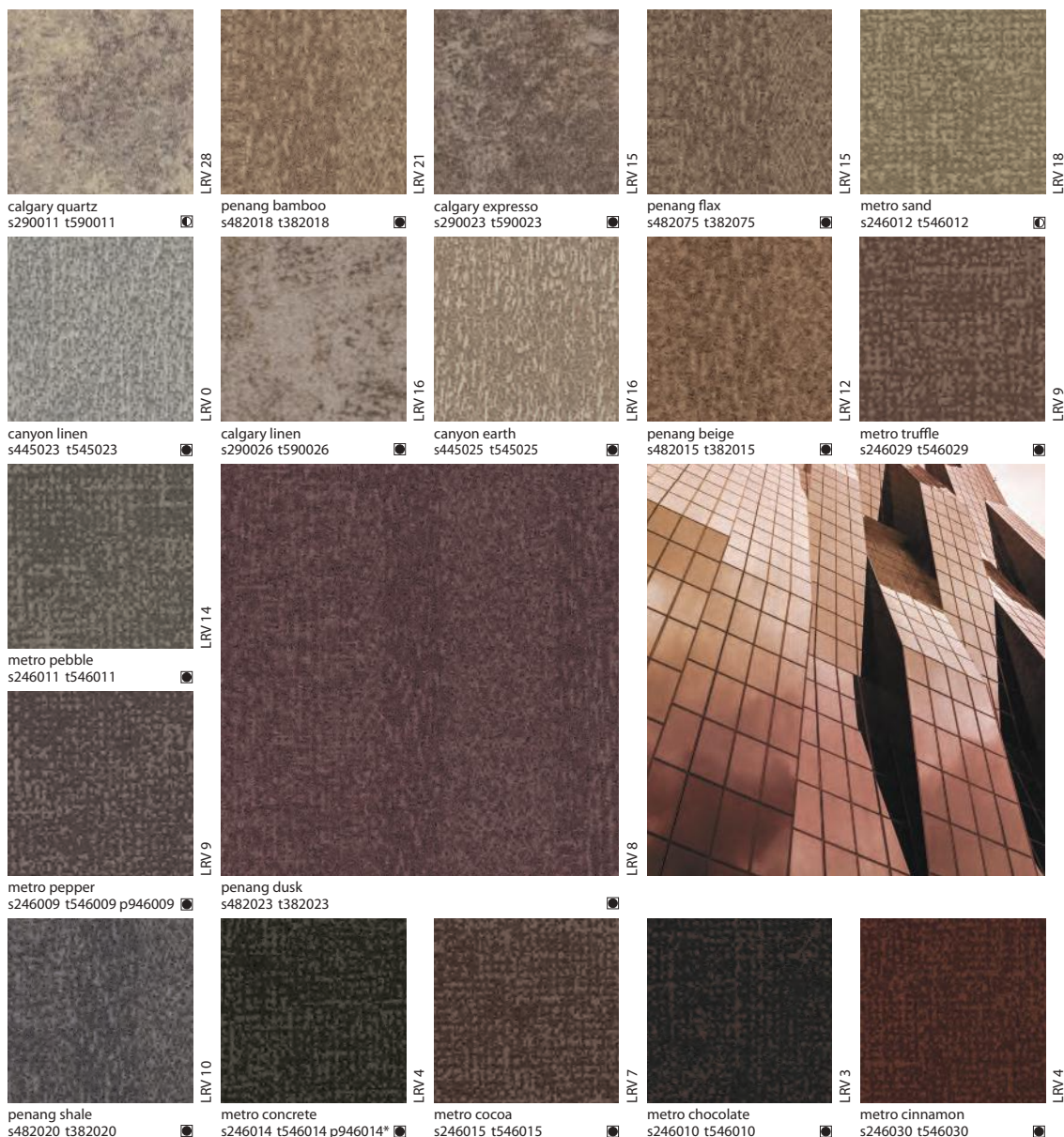
s = Sheet t = Tile

\*Available in 100 x 25cm planks.



Sheet only





**Vacuuming removes dOuBle the aller Gens compared to conventional carpet**

Description	Flocked flooring
Dimensions	Sheet: Roll width 2m Roll length ≤ 30 lm Tile: 50cm x 50cm (3m² per box)
Total thickness	ISO 1765 Sheet: 4.3mm Tile: 5.0mm Plank: 5.0mm
Slip resistance	Pendulum test Wet – low slip risk
Collection size	31
Application	EN 1307 Class 33
Impact sound reduction	EN ISO 717-2 Sheet: ΔLw = 20 dB Tile: ΔLw = 19 dB
CE	EN 14041
Reaction to fire	EN 13501-1 B <sub>fl</sub> -s1
Slip resistance	EN 13893 DS: ≥0.30
Body voltage	EN ISO 10965 < 2 kV



\*Available in 100 x 25cm planks.



A special range of 9 flocked floor coverings that all deliver the appearance of a real wood floor.

The range includes timber designs to suit everyone's needs and colour schemes, from beech and blackened oak to antique pine and european white wood.

Description	Flocked flooring	
Dimensions	Roll width 2m Roll length ≤ 30 Im	
Total thickness	ISO 1765	4.3mm
Slip resistance	Pendulum test	Wet – low slip risk
Collection size	9	
Application	EN 1307	Class 33
Impact sound reduction	EN ISO 717-2	ΔLw = 20 dB
CE	EN 14041	
Reaction to fire	EN 13501-1	B <sub>fl</sub> -s1
Slip resistance	EN 13893	DS: ≥0.30
Body voltage	EN ISO 10965	< 2 kV



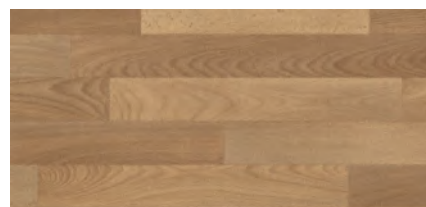
010042 | steamed beech Pattern repeat: 200 x 150cm LRV 26



010038 | white oak Pattern repeat: 200 x 150cm LRV 30



010039 | european white wood Pattern repeat: 200 x 150cm LRV 23



010041 | smoked beech Pattern repeat: 200 x 150cm LRV 28



010036 | american oak Pattern repeat: 200 x 150cm LRV 20



010002 | reclaimed pine Pattern repeat: 200 x 155cm LRV 21



010035 | distressed oak Pattern repeat: 200 x 150cm LRV 19



010040 | antique pine Pattern repeat: 200 x 150cm LRV 12



010037 | blackened oak Pattern repeat: 200 x 150cm LRV 7



Flotex Naturals 010037 | blackened oak  
+ Flotex Vision Image Pavillion 000756 | titanium



## Breeam ratings

Flotex naturals – Flotex HD sheet with PVC backing (EN1307)

	Commercial	Education	Health	Domestic	Retail (Durability)	Retail (Fashion)	Meets Ska criteria
Sheet	A	A	A	B	A	A+	✓

## usage classification

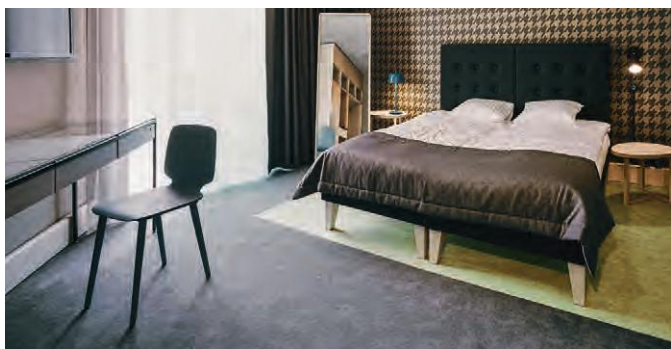
☒ Superior appearance rating
 ☒ Good appearance rating
 ☒ Moderate appearance rating





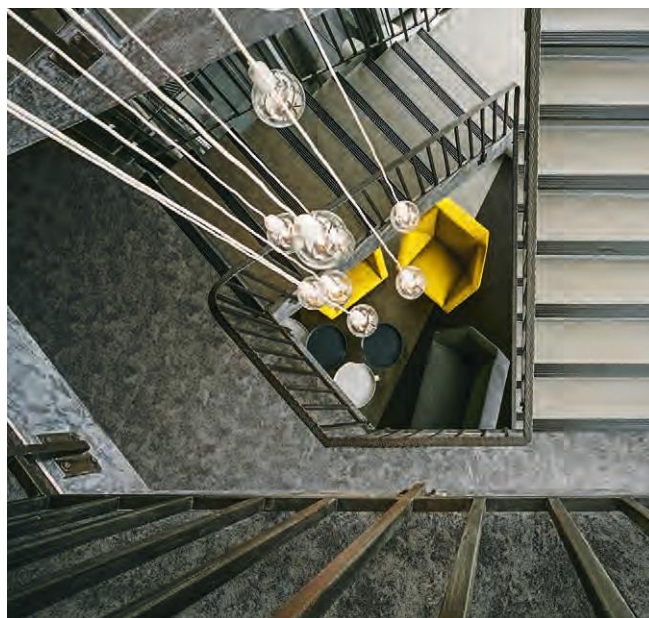
PROJECT:  
**primus**  
LOCATION:  
**estonia**

DESIGNER: **taavi a unre + Mari koger**  
FLOORING MATERIAL:  
Flotex Vision Bespoke



PROJECT:  
**kurshi hotel**  
LOCATION:  
**Jurmala, Latvia**

INTERIOR ARCHITECT: **Juris I asis, 8 a .M.**  
FLOORING MATERIAL:  
Showtime Nuance **900233** | beige + **900201** | souris  
+ Marmoleum Walton **3353** | eggplant purple +  
Marmoleum Concrete + **3707** | black hole + **3705** |  
meteorite + Surestep Star **176952** | mercury + Flotex  
Calgary **s290010** | ash + Flotex Vision Pattern **590001**  
| plaid rust



PROJECT:  
**urbanest**  
LOCATION:  
**covent Garden,  
London**

INTERIOR DESIGN: **denton a ssociates**  
FLOORING MATERIAL:  
Flotex Planks Concrete **139002** | thunder +  
**139003** | smoke + **139001** | cloud







## Fl Ote X linear COLLECTION AT A GLANCE

### flotex® linear

#### integrity<sup>2</sup>

Muted colours, stylish design – Integrity<sup>2</sup> offers both. Create understated flooring designs using tessellation for this range. The effect is a subtle, sophisticated linear effect.



58

### flotex® linear

#### complexity

Whether you choose the familiar tessellated style or the more unusual brick method, Complexity will add a striking and intriguing effect to any commercial space. This linear design has been created to sit alongside Integrity<sup>2</sup> for maximum flexibility.



58

### flotex® linear

#### pinstripe

With its subtle, tailored design, Pinstripe can be installed brick, tessellated or half-drop to achieve very different aesthetic effects. This distinctive and versatile carpet tile is equally at home in offices, retail or leisure environments as it is a style that complements contemporary floor spaces, both large and small.



59

### flotex® linear

#### stratus

The variety of installation methods available for Stratus opens up a huge number of flooring design options and, when used alongside colours from the contemporary Cirrus design, the creative options become almost infinite.



60

### flotex® linear

#### cirrus

The Cirrus design is ideal for large scale installations and also offers a wide choice of fitting methods for additional flexibility. When used in combination with the Stratus design, colour co-ordinated solutions can easily be created.



61

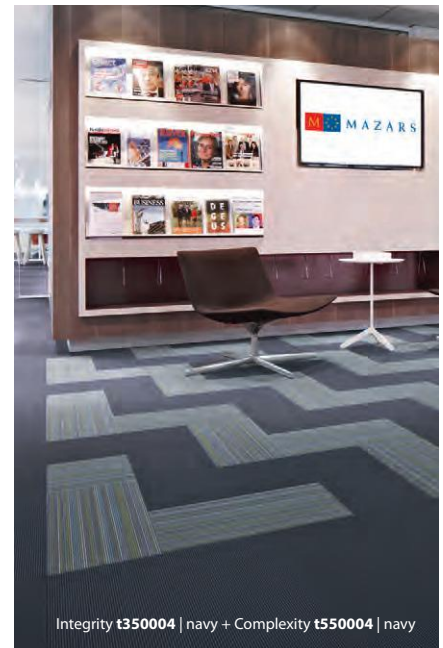
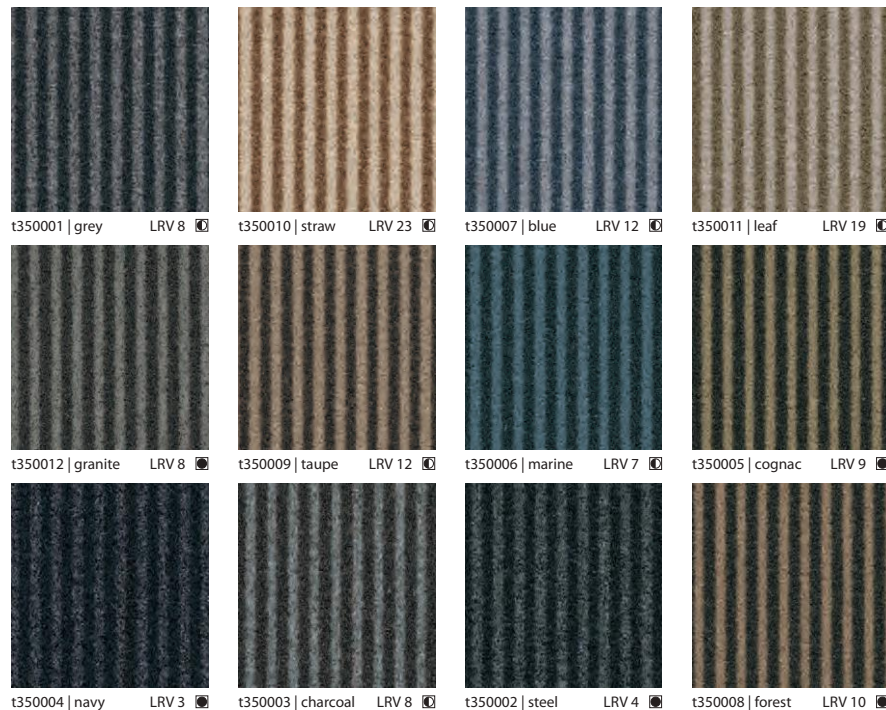
# flotex® linear

## integrity<sup>2</sup>



Muted colours, stylish design – Integrity<sup>2</sup> Flotex tiles offer both. Create understated flooring designs using tessellation for this range. The effect is a subtle, sophisticated linear effect.

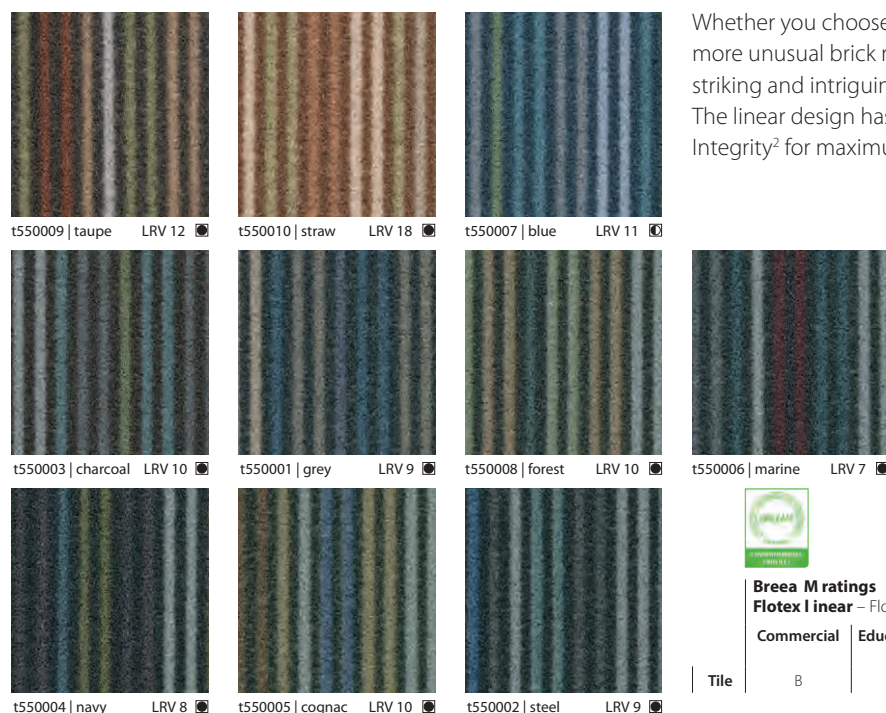
Available in tile format. 60cm x 60cm and 100cm x 100cm available on special request.



Description	Flocked flooring	
Dimensions	Tile: 50cm x 50cm (3m² per box)	
Total thickness	ISO 1765	5.0mm
Slip resistance	Pendulum test	Wet – low slip risk
Collection size	12 (Integrity) 10 (Complexity)	
Application	EN 1307	Class 33
Impact sound reduction	EN ISO 717-2	ΔLw = 19 dB
CE	EN 14041	
Reaction to fire	EN 13501-1	B <sub>f</sub> -s1
Slip resistance	EN 13893	DS: ≥0.30
Body voltage	EN ISO 10965	< 2 kV

# flotex® linear

## complexity



Whether you choose the familiar tessellated style or the more unusual brick method, Complexity tiles will add a striking and intriguing effect to any commercial space. The linear design has been created to sit alongside Integrity<sup>2</sup> for maximum flexibility.



### Breea M ratings

Flotex linear – Flotex F50 tile with recycled backing (EN1307)

	Commercial	Education	Health	Domestic	Retail (Durability)	Retail (Fashion)	Meets Ska criteria
Tile	B	A	A	B	B	A+	✓



# flotex® linear

## pinstripe

Flotex Linear



With its subtle, tailored design, Pinstripe can be installed brick, tessellated or half-drop to achieve very different aesthetic effects. This distinctive and versatile carpet tile is equally at home in offices, retail or leisure environments as it's a style that complements contemporary floor spaces, both large and small.

Available in sheet and tile format.  
Pattern repeat for sheet is 52.5cm x 50cm.



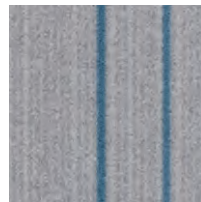
Pinstripe **s262001, t565001** | Piccadilly +  
**s262011, t565011** | Paddington



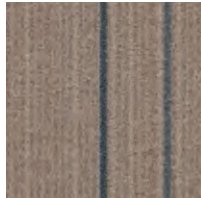
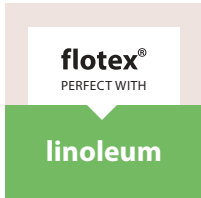
s262007 | Covent Garden LRV 22



s262008 | Soho LRV 22



s262003 | Westminster LRV 12



s262011 | Paddington LRV 18



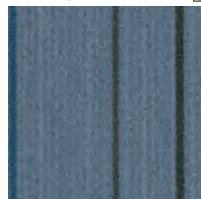
s262004 | Buckingham LRV 16



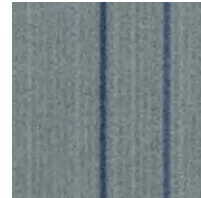
s262001 | Piccadilly LRV 5



s262012 | Baker Street LRV 7



s262009 | Mayfair LRV 14



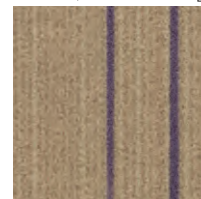
s262002 | Cavendish LRV 17



s262006 | Oxford Circus LRV 24

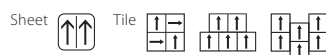


s262010 | Hyde Park LRV 16



s262005 | Kensington LRV 24

Description	Flocked flooring
Dimensions	Sheet: Roll width 2m Roll length ≤ 30 lm Tile: 50cm x 50cm (3m² per box)
Total thickness	ISO 1765 Sheet: 4.3mm Tile: 5.0mm
Slip resistance	Pendulum test Wet – low slip risk
Collection size	12
Application	EN 1307 Class 33
Impact sound reduction	EN ISO 717-2 Sheet: ΔLw = 20 dB Tile: ΔLw = 19 dB
CE	EN 14041
Reaction to fire	EN 13501-1 B <sub>f</sub> s1
Slip resistance	EN 13893 DS: ≥0.30
Body voltage	EN ISO 10965 < 2 kV



### Breeam ratings

**Flotex linear** – Flotex F50 tile with recycled backing (EN1307)  
**Flotex linear** – Flotex F200 sheet with PVC backing (EN1307)



Sheet only

	Commercial	Education	Health	Domestic	Retail (Durability)	Retail (Fashion)	Meets Ska criteria
Tile	B	A	A	B	B	A+	✓
Sheet	A	A+	A+	A	A	A+	✓

### usage classification

● Superior appearance rating ● Good appearance rating ○ Moderate appearance rating

s = Sheet t = Tile

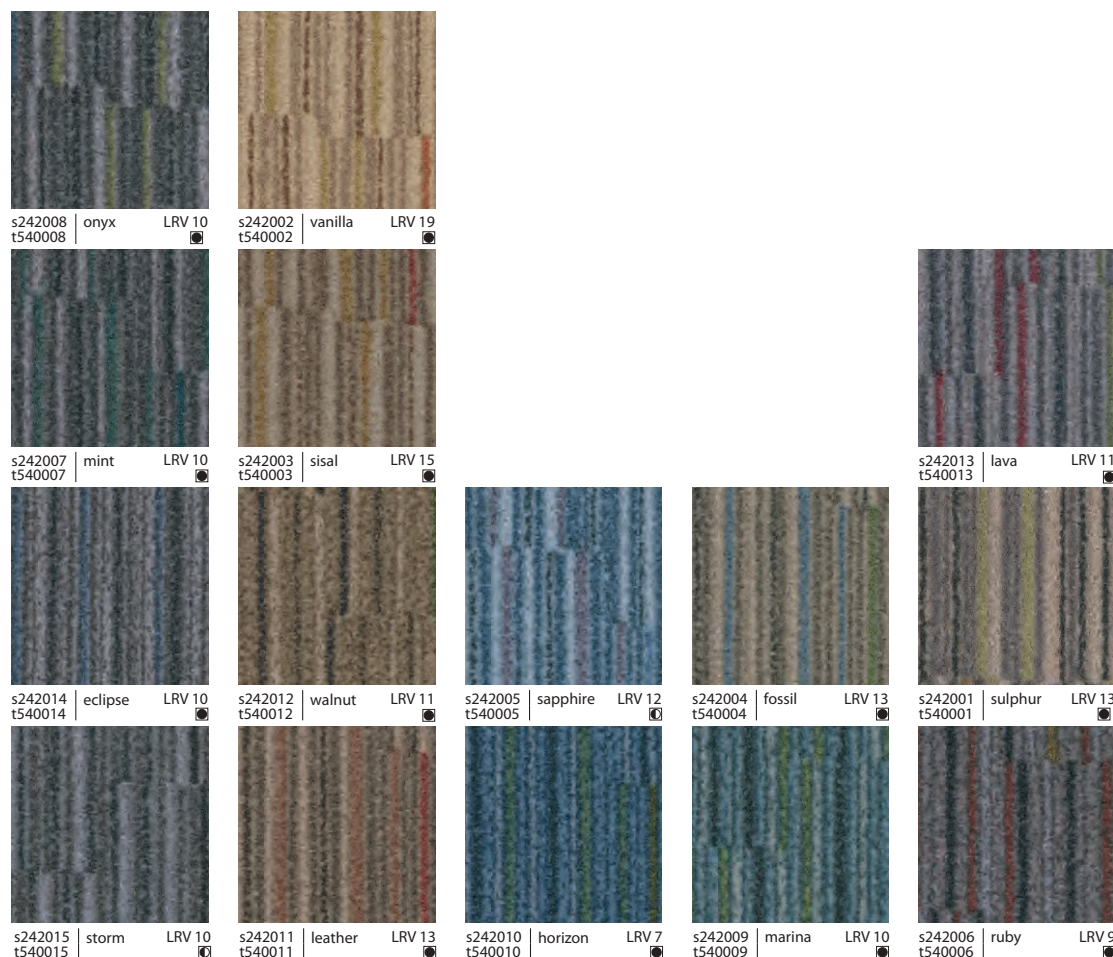
# flotex® linear

## stratus



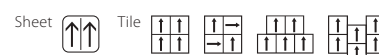
The variety of installation methods available for Stratus opens up a huge number of flooring design options and, when used alongside colours from the contemporary Cirrus design, the creative options become almost infinite.

Available in sheet and tile format. Pattern repeat for sheet is 35cm x 25cm.



Stratus s242008, t540008 | onyx + Cirrus s270008, t570008 | onyx

Description	Flocked flooring	
Dimensions	Sheet: Roll width 2m	Roll length ≤ 30 lm
	Tile: 50cm x 50cm (3m² per box)	
Total thickness	ISO 1765	Sheet: 4.3mm Tile: 5.0mm
Slip resistance	Pendulum test	Wet – low slip risk
Collection size	15	
Application	EN 1307	Class 33
Impact sound reduction	EN ISO 717-2	Sheet: ΔLw = 20 dB
		Tile: ΔLw = 19 dB
CE	EN 14041	
Reaction to fire	EN 13501-1	B <sub>fl</sub> -s1
Slip resistance	EN 13893	DS: ≥0.30
Body voltage	EN ISO 10965	< 2 kV

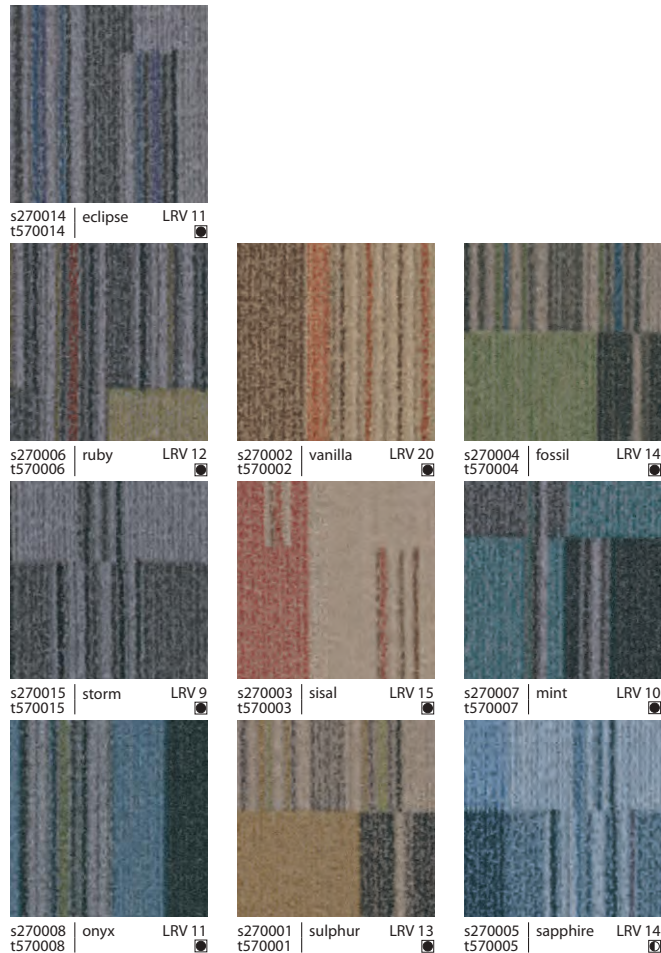






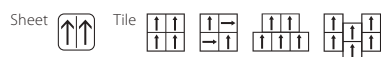
The Cirrus design is ideal for large scale installations and also offers a wide choice of fitting methods for additional flexibility. When used in combination with the Stratus design, colour coordinated solutions can easily be created.

Available in sheet and tile format. Pattern repeat for sheet is 105cm x 200cm.



Cirrus s270003, t570003 | sisal

Description	Flocked flooring
Dimensions	Sheet: Roll width 2m Roll length ≤ 30 lm Tile: 50cm x 50cm (3m² per box)
Total thickness	ISO 1765 Sheet: 4.3mm Tile: 5.0mm
Slip resistance	Pendulum test Wet – low slip risk
Collection size	10
Application	EN 1307 Class 33
Impact sound reduction	EN ISO 717-2 Sheet: ΔLw = 20 dB Tile: ΔLw = 19 dB
CE	EN 14041
Reaction to fire	EN 13501-1 B <sub>fl</sub> -s1
Slip resistance	EN 13893 DS: ≥0.30
Body voltage	EN ISO 10965 < 2 kV



#### Breeam ratings

**Flotex linear** – Flotex F50 tile with recycled backing (EN1307)  
**Flotex linear** – Flotex F200 sheet with PVC backing (EN1307)



Sheet only

	Commercial	Education	Health	Domestic	Retail (Durability)	Retail (Fashion)	Meets Ska criteria
Tile	B	A	A	B	B	A+	✓
Sheet	A	A+	A+	A	A	A+	✓

#### usage classification

● Superior appearance rating ● Good appearance rating □ Moderate appearance rating

s = Sheet t = Tile

## flotex® planks savannah

Flotex Savannah is a finely detailed, naturally inspired texture with a distinct linear patterning influenced by wild grasses. The 6 colourways can be combined in all installation methods to offer a high degree of individuality.



## flotex® planks penang

Flotex Penang offers a stunning look for any modern environment. It creates a subtle linear effect and comes in a range of rich modern shades. The plank format also creates a light and subtle wood grain effect.



## flotex® planks calgary

Flotex Calgary offers a wide colour choice in a soft, natural design that works well in larger areas. The pattern can be easily combined with complementary Flotex or resilient ranges and is the perfect choice for application areas that require a muted ambience.



## flotex® planks canyon

*NEW* Flotex Canyon is a heavily grained semi-plain design inspired by natural earth and rock. It has a distinctive strong texture with a medium contrast.



## flotex® planks metro

Flotex Metro is a versatile semi-plain design which covers a wide and modern colour bank. The understated pattern conveys texture without definite form, creating an authentic feel that is unique to Flotex.





# Fl Ote X pl anks COLLECTION AT A GLANCE

## flotex® planks

### box-cross

With Box-cross every plank is unique, containing a pattern that subtly changes from cross to box, fading one into the other along the length of the plank whilst a diagonal texture plays across the width, blending the planks together.



## flotex® planks

### concrete

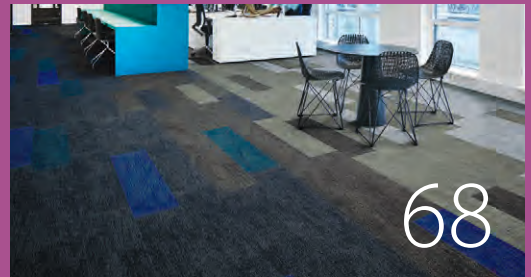
Highly detailed, warm and tactile but with the durability to rival a real concrete floor. Experiment with its four colourways to create a striking look or choose a single colourway for an urban, minimal aesthetic.



## flotex® planks

### lava

Lava is all about texture and colour, giving you an opportunity to define space, highlight areas and explore creative design combinations in every way possible.



## flotex® planks

### seagrass

The ultimate playground when it comes to floor designs. Seagrass is happy when it is laid as herringbone or even double herringbone, but also as half-drop or weave. The creative options are almost limitless.



## flotex® planks

### triad

This pattern offers you the creative freedom to mix and match, combining colours and installation methods easily to customise your floor.



## flotex® planks

### wood

A wood pattern on a textile floor? You will be amazed how good it looks and also how it feels and performs. Soft underfoot and without the disturbance of the noise of foot traffic, it's the ideal floor for busy spaces in offices, hotels rooms, public buildings and elderly care locations.





# flotex® colour planks

penang | calgary | metro | canyon | savannah



Flotex Colour planks offer a wide variety of texture and colour in 100cm x 25cm plank format. They provide ultimate flexibility in floor plan design and are quick and easy to install. Flotex Colour Planks are available from stock and are suitable for raised access floors and ideal for, but not limited to, office environments.

Plank size  
100 x 25 cm



Savannah 911001 | pearl + 911002 | cement

## flotex® planks

savannah



911001 | pearl



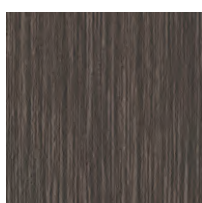
911002 | cement



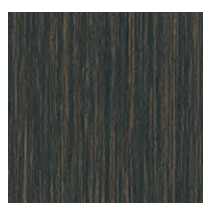
911004 | charcoal



911003 | almond



911005 | walnut



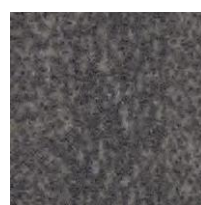
911006 | liquorice

## flotex® planks

penang



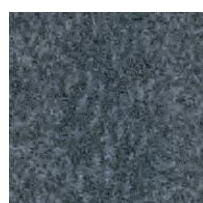
p982017 | nimbus LRV 14



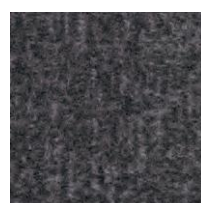
p982020 | shale LRV 10



p982007 | zinc LRV 9



p982004 | mercury LRV 10



p982037 | grey LRV 10



p982031 | ash LRV 5




Plank size  
100 x 25 cm

## flotex® planks

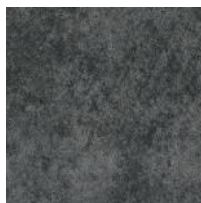
### calgary



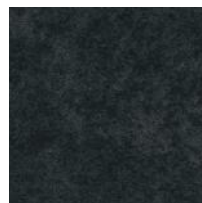
p990019 | carbon LRV 18



p990012 | cement LRV 13



p990002 | grey LRV 8



p990010 | ash LRV 4

Description	Flocked flooring	
Dimensions	100cm x 25cm (2.5m² per box)	
Total thickness	ISO 1765	5.0mm
Slip resistance	Pendulum test	Wet – low slip risk
Collection size	15	
Application	EN 1307	Class 33
Impact sound reduction	EN ISO 717-2	ΔLw = 19 dB
CE	EN 14041	
Reaction to fire	EN 13501-1	B <sub>f</sub> -s1
Slip resistance	EN 13893	DS: ≥0.30
Body voltage	EN ISO 10965	< 2 kV

## flotex® planks

### canyon



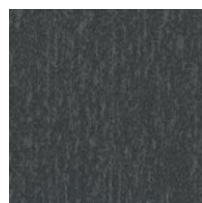
p945022 | limestone LRV 17



p945021 | stone LRV 13



p945020 | pumice LRV 8



p949019 | slate LRV 4

Half-drop installation 1	Half-drop installation 2	Random drop installation 1	Random drop installation 2

#### usage classification

- Superior appearance rating
- Good appearance rating
- Moderate appearance rating

## flotex® planks

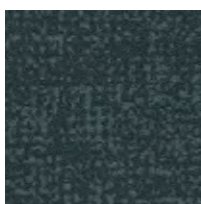
### metro



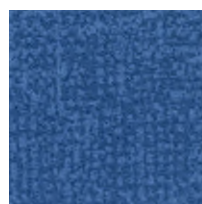
p946005 | nimbus LRV 13



p946006 | grey LRV 8



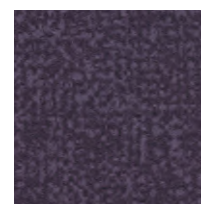
p946024 | carbon LRV 5



p946020 | lagoon LRV 8



p946019 | citrus LRV 18



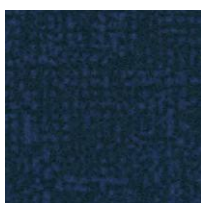
p946016 | grape LRV 5



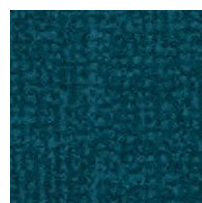
p946007 | ash LRV 4



p946008 | anthracite LRV 3



p946001 | indigo LRV 3



p946032 | petrol LRV 4



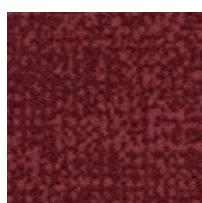
p946011 | pebble LRV 14



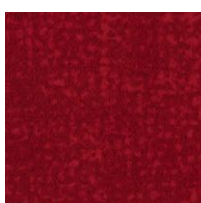
p946009 | pepper LRV 9



p946014 | concrete LRV 4



p946017 | berry LRV 5



p946026 | red LRV 9



p946025 | tangerine LRV 18


flotex®  
PERFECT WITH

allura flex

# flotex® planks

## box-cross



With one design you can transform a space. With Box-cross every plank is unique, containing a pattern that subtly changes from cross to box, fading one into the other along the length of the plank whilst a diagonal texture plays across the width, blending the planks together.

Plank size  
100 x 25 cm



Box-cross 133011 | anthracite

Description	Flocked flooring	
Dimensions	100cm x 25cm (2.5m <sup>2</sup> per box)	
Total thickness	ISO 1765	5.0mm
Slip resistance	Pendulum test	Wet – low slip risk
Collection size	15	
Application	EN 1307	Class 33
Impact sound reduction	EN ISO 717-2	ΔLw = 19 dB
CE	EN 14041	
Reaction to fire	EN 13501-1	B <sub>fl</sub> -s1
Slip resistance	EN 13893	DS: ≥0.30
Body voltage	EN ISO 10965	< 2 kV



Half-drop  
installation 1



Half-drop  
installation 2



Random drop  
installation 1



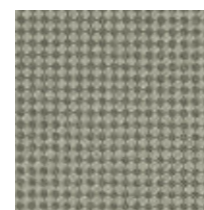
Random drop  
installation 2

### usage classification

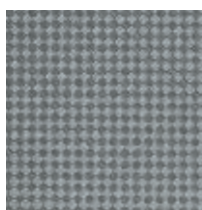
- Superior appearance rating
- Good appearance rating
- Moderate appearance rating



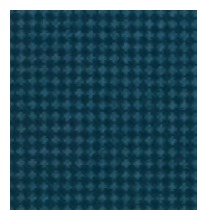
133009 | petrol LRV 7



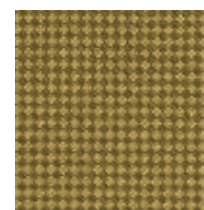
133005 | linen LRV 20



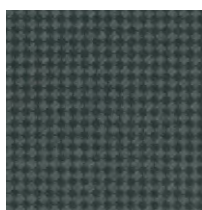
133002 | pearl LRV 25



133003 | ocean LRV 6



133015 | gold LRV 17



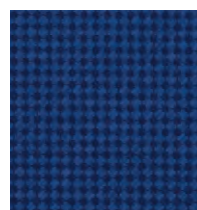
133007 | granite LRV 7



133004 | biscuit LRV 20



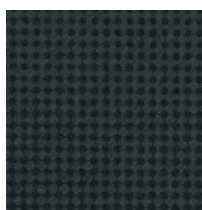
133013 | mulberry LRV 4



133006 | lagoon LRV 5



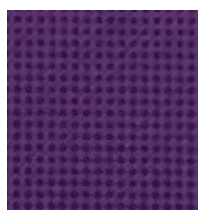
133001 | amber LRV 11



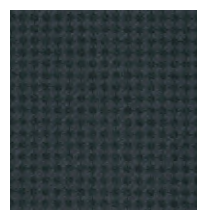
133011 | anthracite LRV 4



133010 | seal LRV 7



133012 | purple LRV 4



133008 | blueberry LRV 4



133014 | forest LRV 7



# flotex® planks

## concrete

Flotex Planks



A concrete look like never before. Highly detailed, warm and tactile but with the durability to rival a real concrete floor. Experiment with its four colourways to create a striking look or choose a single colourway for an urban, minimal aesthetic.

Plank size  
100 x 25 cm



Concrete 139001 | cloud + 139002 | thunder + 139003 | smoke



139001 | cloud LRV 18



139003 | smoke LRV 16



139004 | storm LRV 11



139002 | thunder LRV 11

Description	Flocked flooring	
Dimensions	100cm x 25cm (2.5m² per box)	
Total thickness	ISO 1765	5,0mm
Slip resistance	Pendulum test	Wet – low slip risk
Collection size	4	
Application	EN 1307	Class 33
Impact sound reduction	EN ISO 717-2	$\Delta L_w = 19$ dB
CE	EN 14041	
Reaction to fire	EN 13501-1	B <sub>fl</sub> -s1
Slip resistance	EN 13893	DS: $\geq 0.30$
Body voltage	EN ISO 10965	< 2 kV



Half-drop installation 1



Half-drop installation 2



Herringbone installation 1



Herringbone installation 2



Double herringbone installation 1



Double herringbone installation 2



Weave installation 1



Weave installation 2



# flotex® planks

## lava



Lava is all about texture and colour, giving you an opportunity to define space, highlight areas and explore creative design combinations in every way possible. From subtle shades to vibrant brights, Lava brings a palette of choice to the floor.

Plank size  
100 x 25 cm



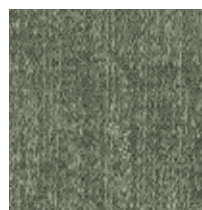
145002 | Tambora LRV 18



145007 | Pinatubo LRV 10



145015 | Fayal LRV 4



145016 | Ebeko LRV 18



145017 | Fuji LRV 16



145006 | Nikko LRV 8



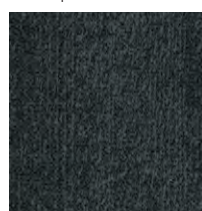
145011 | Krakatoa LRV 7



145003 | Etna LRV 13



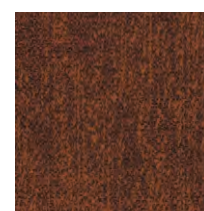
145004 | Aqua LRV 5



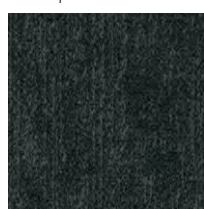
145014 | Pelee LRV 5



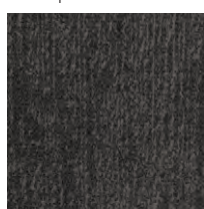
145012 | Vuisini LRV 15



145013 | Elbrus LRV 8



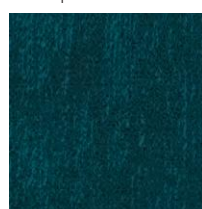
145001 | Vesuvius LRV 5



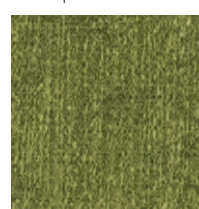
145010 | Thera LRV 6



145009 | Trident LRV 5



145005 | Madeira LRV 5



145018 | Malos LRV 18



145008 | Koro LRV 8



Description	Flocked flooring	
Dimensions	100cm x 25cm (2.5m <sup>2</sup> per box)	
Total thickness	ISO 1765	5.0mm
Slip resistance	Pendulum test	Wet – low slip risk
Collection size	18	
Application	EN 1307	Class 33
Impact sound reduction	EN ISO 717-2	$\Delta L_w = 19$ dB
CE	EN 14041	
Reaction to fire	EN 13501-1	B <sub>f</sub> -s1
Slip resistance	EN 13893	DS: $\geq 0.30$
Body voltage	EN ISO 10965	< 2 kV



Half-drop installation 1



Half-drop installation 2



Herringbone installation 1



Herringbone installation 2



Weave installation 1



Weave installation 2

Lava **145002** | Tambora + **145005** | Madeira + **145007** | Pinatubo  
+ **145009** | Trident + **145010** | Thera + **145014** | Pelee



# flotex® planks

## seagrass

Flotex Planks



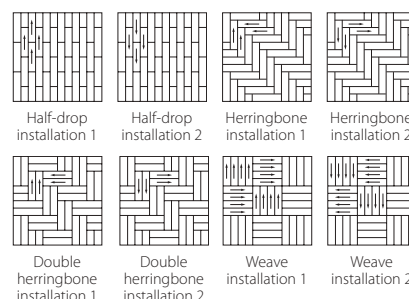
The ultimate playground when it comes to floor designs. Seagrass is happy when it is laid as herringbone or even double herringbone, but also as half-drop or weave. The creative options are almost limitless. Although the colourways have been designed to be easily combined, a single colour floor design looks equally sophisticated.

Plank size  
100 x 25 cm



Seagrass 111001 | pearl + 111002 | cement + 111004 | charcoal

Description	Flocked flooring	
Dimensions	100cm x 25cm (2.5m² per box)	
Total thickness	ISO 1765	5.0mm
Slip resistance	Pendulum test	Wet – low slip risk
Collection size	6	
Application	EN 1307	Class 33
Impact sound reduction	EN ISO 717-2	$\Delta L_w = 19$ dB
CE	EN 14041	
Reaction to fire	EN 13501-1	B <sub>fl</sub> -s1
Slip resistance	EN 13893	DS: $\geq 0.30$
Body voltage	EN ISO 10965	< 2 kV



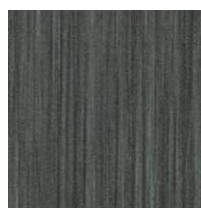
111001 | pearl LRV 26 ☐



111003 | almond LRV 19 ☐



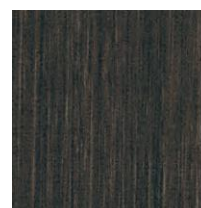
111005 | walnut LRV 8 ●



111004 | charcoal LRV 9 ●



111002 | cement LRV 13 ●



111006 | liquorice LRV 5 ●

### usage classification

● Superior appearance rating    ● Good appearance rating    ☐ Moderate appearance rating

# flotex® planks

## triad



This pattern offers you the creative freedom to mix and match, combining colours and installation methods easily to customise your floor. It looks great laid half-drop, herringbone or weave and has a range of exciting colourways with highlight options. There's also a unique embossed version to add more texture and tactility to your floor.

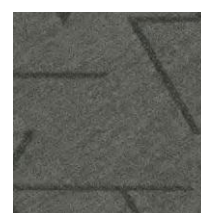
All colourways in the Triad collection feature a superior appearance rating.

Plank size  
100 x 25 cm

Description	Flocked flooring	
Dimensions	100cm x 25cm (2.5m <sup>2</sup> per box)	
Total thickness	ISO 1765	5.0mm
Slip resistance	Pendulum test	Wet – low slip risk
Collection size	19	
Application	EN 1307	Class 33
Impact sound reduction	EN ISO 717-2	ΔLw = 19 dB
CE	EN 14041	
Reaction to fire	EN 13501-1	B <sub>fl</sub> -s1
Slip resistance	EN 13893	DS: ≥0.30
Body voltage	EN ISO 10965	< 2 kV



131015 | stone LRV 18



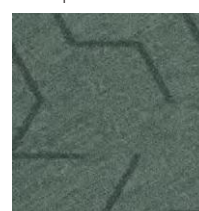
131010 | taupe LRV 11



131004 | amber LRV 12



131014 | amber line LRV 8



131016 | mint LRV 12



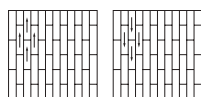
131009 | bronze LRV 6



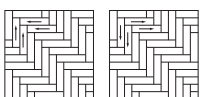
131006 | silver LRV 8



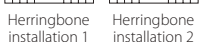
131012 | blue line LRV 8



Half-drop installation 1



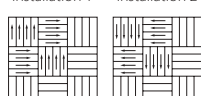
Half-drop installation 2



Herringbone installation 1



Herringbone installation 2



Weave installation 1



Weave installation 2

### usage classification

- Superior appearance rating
- Good appearance rating
- Moderate appearance rating



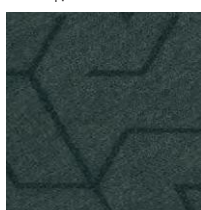
131007 | steel LRV 9



131005 | platinum LRV 9



131017 | anthracite LRV 5



131008 | shadow LRV 6



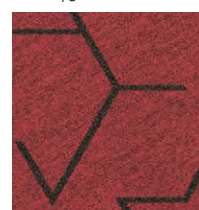
121001 | embossed zinc LRV 8



131003 | green LRV 10



131013 | green line LRV 8



131001 | red LRV 8



131011 | red line LRV 9



131002 | blue LRV 7



131018 | navy LRV 4



# flotex® planks

## wood

Flotex Planks

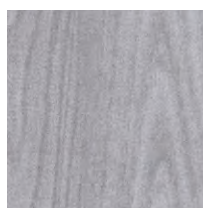


A wood pattern on a textile floor? You will be amazed how good it looks and also how it feels and performs. Soft underfoot and without the disturbance of the noise of foot traffic, it's the ideal floor for busy spaces in offices, hotels rooms, public buildings and elderly care locations. It's a mindset change. Get the look of real wood with the advantages of a textile floor. All installation patterns are possible, simply allow your imagination free rein to create.

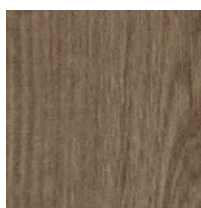
Plank size  
100 x 25 cm



Wood 151001 | black wood + 151002 | grey wood + 151004 | american wood+ 151006 | antique wood



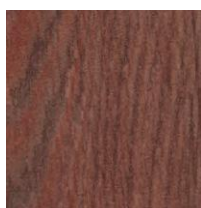
151003 | silver wood LRV 31



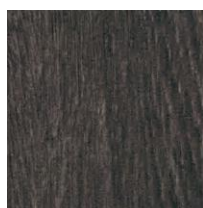
151004 | american wood LRV 15



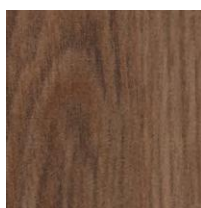
151002 | grey wood LRV 13



151005 | red wood LRV 9



151001 | black wood LRV 8



151006 | antique wood LRV 9

Description	Flocked flooring	
Dimensions	100cm x 25cm (2.5m² per box)	
Total thickness	ISO 1765	5,0mm
Slip resistance	Pendulum test	Wet – low slip risk
Collection size	6	
Application	EN 1307	Class 33
Impact sound reduction	EN ISO 717-2	$\Delta L_w = 19$ dB
CE	EN 14041	
Reaction to fire	EN 13501-1	B <sub>fl</sub> -s1
Slip resistance	EN 13893	DS: $\geq 0.30$
Body voltage	EN ISO 10965	< 2 kV



Half-drop  
installation 1



Half-drop  
installation 2



Herringbone  
installation 1



Herringbone  
installation 2



Double  
herringbone  
installation 1



Double  
herringbone  
installation 2



Weave  
installation 1



Weave  
installation 2





**Flexible Flooring Solutions from Entry to Exit**

T: +90 212 274 44 22 | +90 212 274 42 89 | +90 212 274 42 90 E: info@anilzemin.com | bilgi@anilzemin.com | www.anilzemin.com  
A: Vadi İstanbul Bulvar 2A Ofis | Ayazağa Mah. Cendere Cad. No: 109 / I Daire: 15-16 Sarıyer / İstanbul

#### **logistics 1**

T: +90 212 229 44 38 | E: info@anilzemin.com | bilgi@anilzemin.com | www.anilzemin.com A: Poligon  
Mah. Sevim Sok. No:10/B İstinye / Sarıyer / İstanbul

#### **logistics 2**

Hellmann Worldwide Logistics

#### **Samples:**

Tel: 0212 274 44 22

E-mail: info@anilzemin.com

**Find us on @anilzemin**

