

Flexible Flooring Solutions From Entry To Exit



Textile Carpet Tiles & Planks

tessera®



LOOP PILE CARPET TILES

Carpet tiles with a standard loop pile construction are designed to maintain their good looks in the most demanding heavy traffic areas of buildings, such as corridors and reception areas.

Multi-height loop pile carpet tiles offer distinctive in-built texture and contemporary styling coupled with a robust and durable construction.



tessera® cloudscape
tessera® cloudscape merge



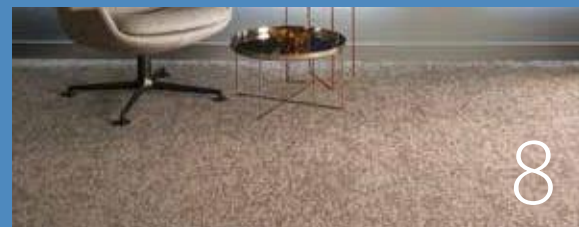
4

tessera® chroma



6

tessera® earthscape **NEW**



8

tessera® layout & outline



10



Our new Forbo Direct scheme offers delivery of 26 of the most popular Tessera Layout & Outline carpet tile colours within 5 working days!*

tessera® nexus



14

TESSERA COLLECTION AT A GLANCE

tessera® inline



16

tessera® arran



17

tessera® teviot



18

tessera® create space 1



20

tessera® create space 2



21

tessera® barcode

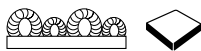


22

tessera® diffusion



23



Tessera Cloudscape, as the name suggests, is an all over organic carpet tile design that takes inspiration from the ever-changing vista of cloud formations and tonal colour progressions in the sky above us.

Cloudscape's 16 tonal colourways, bearing evocative names such as cumulus blue, dawn chorus and summer storm, range from very dark to very pale and cover a wide range of LRV requirements. Tiles can be laid in monolithic or non-directional fashion and their long term appearance retention is assured as they are manufactured using 100% solution dyed polyamide 6 yarns for class 33 durability and colourfastness.



3404 | cumulus blue LRV 11

Description	Tufted multi-height loop pile carpet tile	
Dimensions	50cm x 50cm	
Total thickness	7.2mm ± 10%	
Pile height	4.4mm ± 0.5mm	
Pile weight	665gsm ± 10%	
Yarn	100% polyamide 6	
Collection size	16 (4m ² per box)	
Application	EN 1307	Class 33
Impact sound reduction	ISO 140-8	$\Delta L_W = 26$ dB
Recycled content	61%	
CE	EN 14041	
Reaction to fire	EN 13501-1	B _{fl} -s1



3411 | cirrus sky LRV 10



3403 | thunderbolt LRV 6



3400 | nimbus grey LRV 15



3408 | grey dawn LRV 13



Cloudscape 3406 | sirocco blue + 3404 | cumulus blue



3414 | mistral gale LRV 8



3407 | april shower LRV 12



3405 | sunset sky LRV 17



3415 | gulf stream LRV 15



3410 | stormy weather LRV 8



3401 | light airs LRV 19



3406 | sirocco blue LRV 7



3409 | dawn chorus LRV 18



3412 | summer storm LRV 15



3413 | monsoon cloud LRV 13



3410 | stormy weather LRV 8



Tessera Cloudscape Merge creates an interesting transition from one area to another. Reinforcing the organic structure of Tessera Cloudscape and the tonal progression of colours creating an environment helping us to reconnect.

Cloudscape Merge is available on all of the 16 Cloudscape colours and as the 'Merge' tiles are manufactured from products in the order for your interior flooring, the 'Merge' is batch matched to the main flooring.

The minimum order quantity is only 2 boxes and the lead time is approximately 3 weeks.

To order Cloudscape Merge speak to your local Business Area Manager and quote the colourway numbers of the Cloudscape products you'd like to combine.



Cloudscape 3413 | monsoon green + 3401 | light airs

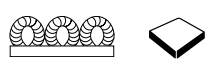


For samples, please contact our sample department on 0800 731 2369 or email samples.uk@forbo.com with details of the colours you want to 'merge'.

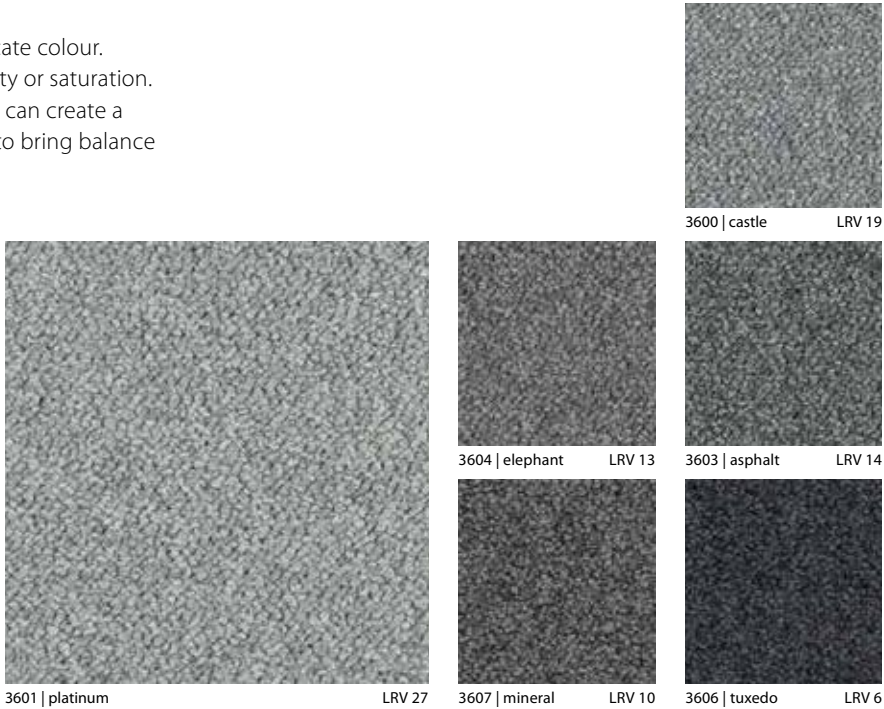


BREEAM ratings
Tessera Cloudscape – Carpet Tiles (EN1307)

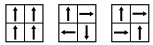
Commercial	Education	Health	Domestic	Retail (Durability)	Retail (Fashion)	Meets Ska criteria
A	A	A	B	A	A+	✓



Chroma is the quality by which we communicate colour. It is how we define a colour's purity, its intensity or saturation. In this way it provides a measure by which we can create a relationship between colours, allowing them to bring balance and harmony to a space.

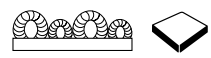


Description	Tufted textured loop pile carpet tile	
Dimensions	50cm x 50cm	
Total thickness	6.4mm ± 10%	
Pile height	3.5mm ± 0.5mm	
Pile weight	750gsm ± 10%	
Yarn	100% polyamide 6	
Collection size	27 (4m² per box)	
Application	EN 1307	Class 33
Impact sound reduction	ISO 140-3	$\Delta L_W = 26$ dB
Recycled content	62%	
CE	EN 14041	
Reaction to fire	EN 13501-1	B _s -s1



Our recommended adhesive is 542 Eurofix Tack Plus. Full technical specifications are available at www.forbo-flooring.co.uk/downloads. Please note: Digital representations may vary from the actual product. Please order a sample to see the full effect. Contact 0800 731 2369.





Seeing things from above creates freedom bringing new and unexpected perspectives. As the distance from the ground level increases, patterns and textures in the landscape emerge and areas of colour reveal themselves upon the canvas of the earth.



3251 | moraine LRV 19

3252 | umber LRV 18

3259 | fjord LRV 18



3250 | iceberg LRV 27

3255 | desert LRV 17

3260 | savanna LRV 17



3253 | quake LRV 15

3254 | basalt LRV 14

3258 | terrain LRV 13



3256 | meteor LRV 10

3257 | strata LRV 10

Description	Tufted multi-pile height loop pile carpet tile	
Dimensions	50cm x 50cm	
Total thickness	7.1mm ± 10%	
Pile height	4.0mm ± 0.5mm	
Pile weight	978gsm ± 10%	
Yarn	100% Antron® Lumena polyamide 6.6	
Collection size	12 (4m² per box)	
Application	EN 1307	Class 33
Impact sound reduction	ISO 140-3	$\Delta L_W = 26$ dB
Recycled content	57%	
CE	EN 14041	
Reaction to fire	EN 13501-1	B _{f1} -s1



tessera® layout & outline

Featuring a contemporary palette of 32 colours with eight co-ordinated striped designs, the Layout and Outline ranges offer a multitude of creative and inspiring combinations in any flooring scheme.

The dynamic colour palette of Layout is hugely versatile featuring a comprehensive choice of modern neutrals in combination with diverse and directional brighter shades. Colours can be used independently or in combination to achieve a myriad of interior styles.

Outline is a subtly textured striped loop pile carpet tile and each colourway is perfectly matched to two Layout colours. Combinations of Outline and Layout allow complete freedom of expression, creating connections, highlights and transitions to enhance any style of scheme.

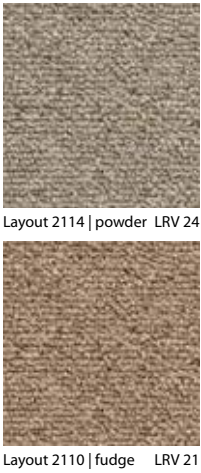
**Available in plank format – see page 36.*



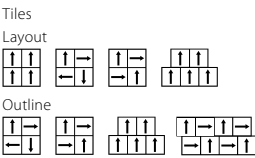
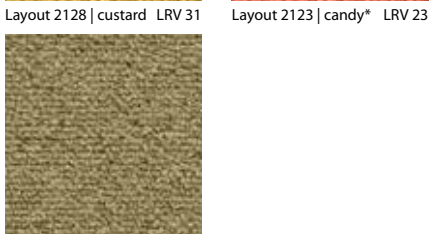
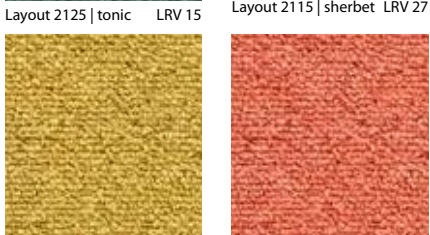
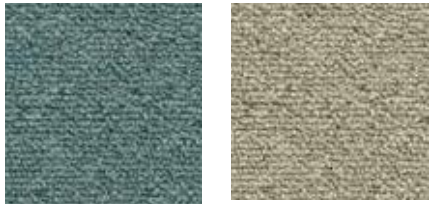
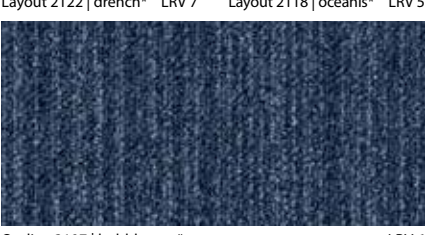
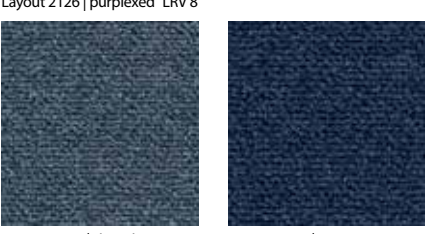
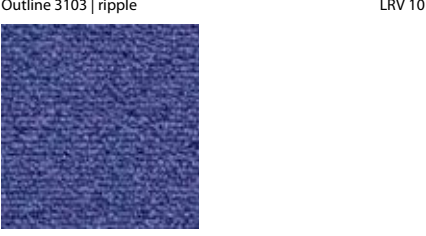
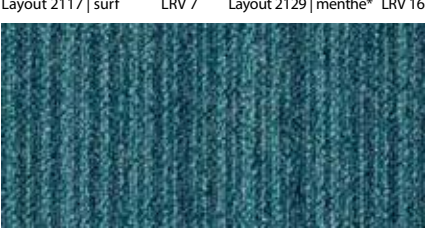
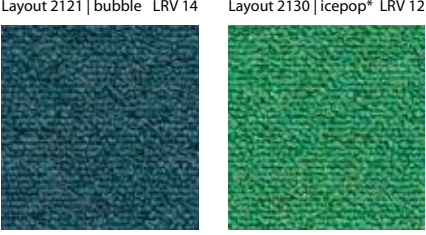
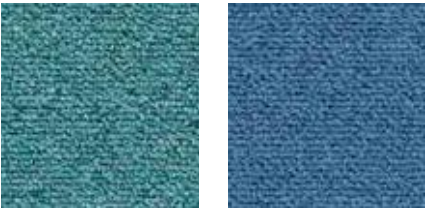
Tessera Layout & Outline 2117 | surf + 2125 | tonic + 2105 | aniseed



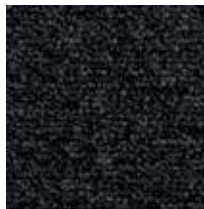
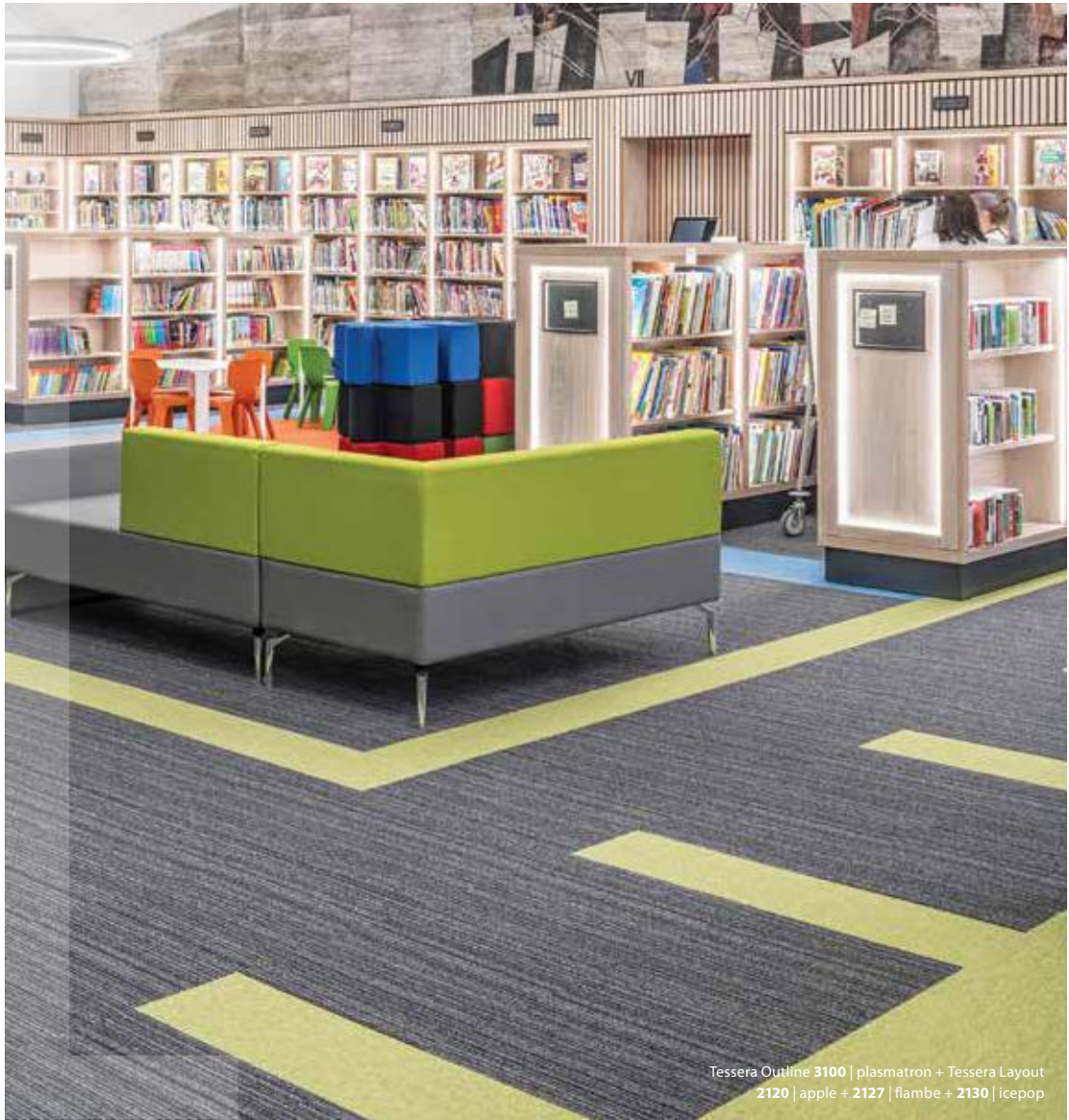
Tile and plank formats



Description	Tufted low loop pile carpet tile	
Dimensions	50cm x 50cm	
Total thickness	5.8mm ± 10%	
Pile height	2.9mm ± 0.5mm	
Pile weight	580gsm ± 10%	
Yarn	100% polyamide 6	
Dye method	100% solution dyed	
Collection size	Layout 32 Outline 8 5m² per box	
Application	EN 1307	Class 33
Impact sound reduction	ISO 10140-3	ΔL _w = 27 dB
Recycled content	62%	
CE	EN 14041	
Reaction to fire	EN 13501-1	B _{fl} -s1



BREEAM ratings Tessera Layout & Outline – Carpet Tiles (EN1307)						
Commercial	Education	Health	Domestic	Retail (Durability)	Retail (Fashion)	Meets Ska criteria
A	A	A	A	A	A+	✓



Layout 2100 | mono* LRV 4



Layout 2101 | graphine LRV 5



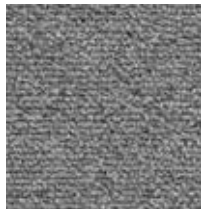
Outline 3100 | plasmatron* LRV 6



Layout 2112 | frosting* LRV 28



Layout 2113 | nougat LRV 22



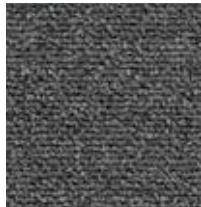
Layout 2109 | shard LRV 17



Layout 2108 | calcium* LRV 13



Layout 2105 | aniseed LRV 9



Layout 2104 | alloy* LRV 9



Layout 2127 | flambe LRV 13



Layout 2116 | kryptonite LRV 9



Layout 2120 | apple* LRV 20



Layout 2119 | maraschino* LRV 7



Layout 2131 | mango* LRV 18



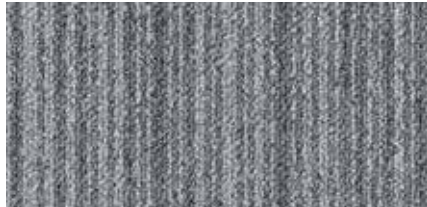
Outline 3106 | fruitsalad LRV 14



Layout 2130 | icepop* LRV 12



Layout 2125 | tonic LRV 15



Outline 3102 | soda* LRV 21



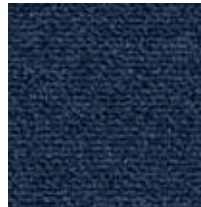
Layout 2117 | surf LRV 7



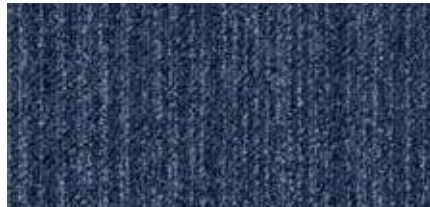
Layout 2122 | drench* LRV 7



Outline 3103 | ripple LRV 10



Layout 2118 | oceanis* LRV 5



Outline 3107 | bubblegum* LRV 6



Layout 2103 | balsamic* LRV 13



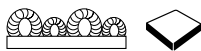
Outline 3101 | colabottle* LRV 9



Layout 2107 | brulee* LRV 7

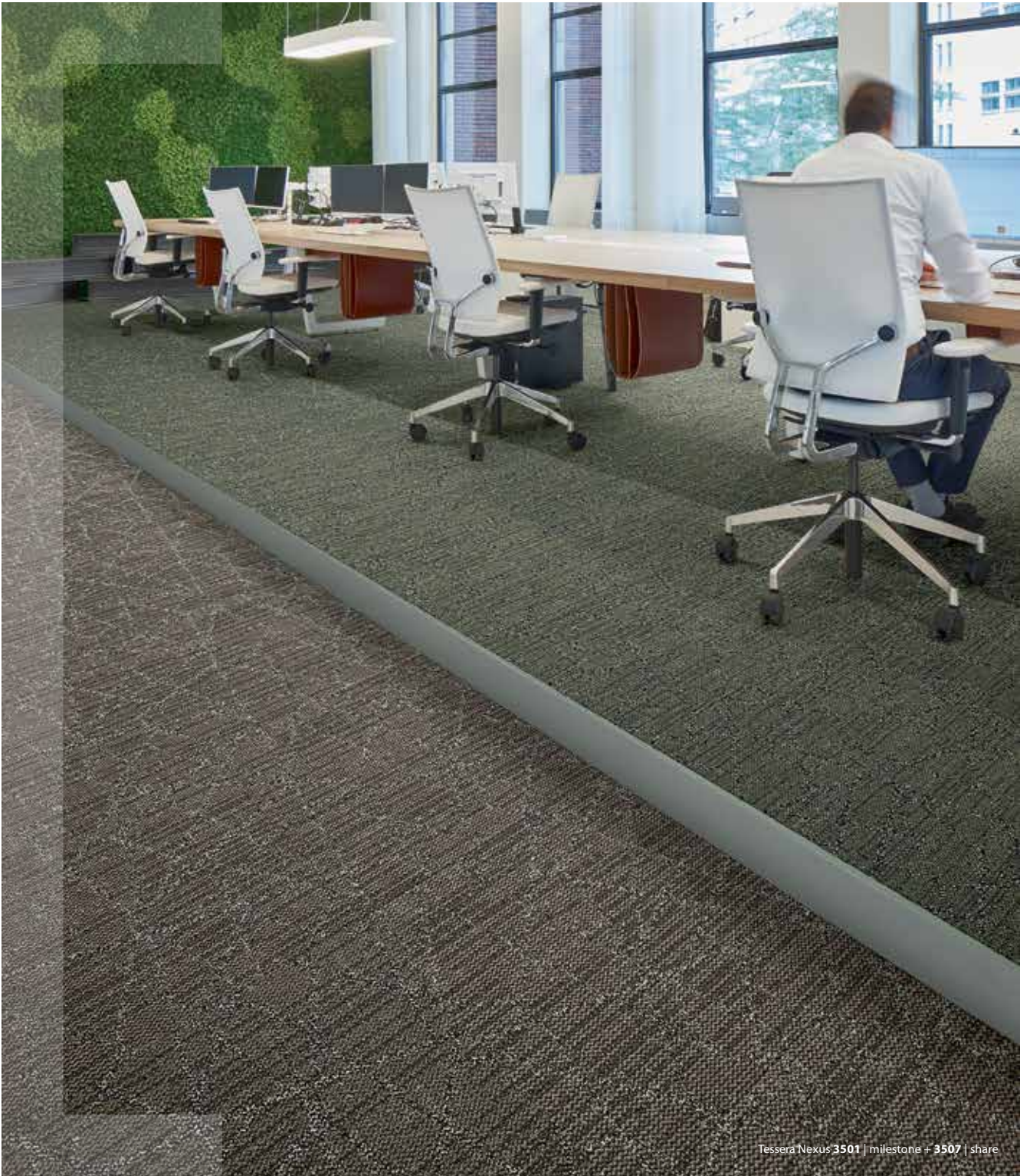


Description	Tufted low loop pile carpet tile	
Dimensions	50cm x 50cm	
Total thickness	5.8mm ± 10%	
Pile height	2.9mm ± 0.5mm	
Pile weight	580gsm ± 10%	
Yarn	100% polyamide 6	
Dye method	100% solution dyed	
Collection size	Layout 21 Outline 5 5m² per box	
Application	EN 1307	Class 33
Impact sound reduction	ISO 10140-3	$\Delta L_w = 27$ dB
Recycled content	62%	
CE	EN 14041	
Reaction to fire	EN 13501-1	B _{fl} -s1



Merging a metallic web overlay with a sophisticated striated ground, Tessera Nexus creates a network of connections in 9 contemporary colourways.

Tessera Nexus can easily be combined with Allura Flex vinyl tiles using the same adhesive, without the need for transition strips, additional profiles, or inconvenient build-up of the subfloor.



Description	Tufted multi-height loop pile carpet tile	
Dimensions	50cm x 50cm	
Total thickness	6.3mm ± 10%	
Pile height	3.1mm ± 0.5mm	
Pile weight	790gsm ± 10%	
Yarn	100% Invista Antron® Lumena polyamide 6.6	
Dye method	100% solution dyed	
Collection size	9 (4m² per box)	
Application	EN 1307	Class 33
Impact sound reduction	ISO 10140-3 $\Delta L_w = 25$ dB	
Recycled content	59%	
CE	EN 14041	
Reaction to fire	EN 13501-1 B _{fl} -s1	



3500 | agenda LRV 21



3501 | milestone LRV 13



3503 | engage LRV 19



3504 | review LRV 12



3507 | share LRV 12



3506 | feedback LRV 11



3508 | groupchat LRV 7



3502 | co-lab LRV 9



3505 | refresh LRV 7

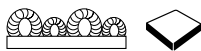


Tessera Nexus 3506 | feedback + 3503 | engage



BREEAM ratings
Tessera Nexus – Carpet Tiles (EN1307)

Commercial	Education	Health	Domestic	Retail (Durability)	Retail (Fashion)	Meets Ska criteria
B	A	A	B	B	A+	✓



Featuring a contemporary yet concise palette of 10 useable colourways, Inline combines soft geometric structure with intermittent linearity. The strong use of differential texture creates a natural, randomised appearance enabling monolithic installation. Tessera Inline can also be co-ordinated with Allura Flex loose lay LVTs or other Forbo products to add elements of colour, interest and value to a variety of interior schemes.



871 | syllabub LRV 25



878 | steam LRV 23



875 | banoffee LRV 20



877 | mallard LRV 23



879 | mellow LRV 25



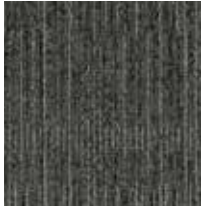
873 | tungsten LRV 15



874 | tiramisu LRV 16



872 | onyx LRV 8

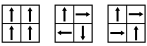


870 | molasses LRV 8



876 | celestial LRV 8

Description	Tufted multi-height loop pile carpet tile	
Dimensions	50cm x 50cm	
Total thickness	6.5mm ± 10%	
Pile height	3.9mm ± 0.5mm	
Pile weight	605gsm ± 10%	
Yarn	100% polyamide 6	
Dye method	100% solution dyed	
Collection size	10 (4m² per box)	
Application	EN 1307	Class 33
Impact sound reduction	ISO 10140-3	$\Delta L_W = 25$ dB
Recycled content	63%	
CE	EN 14041	
Reaction to fire	EN 13501-1	B ₁ -s1



Our recommended adhesive is 542 Eurofix Tack Plus. Full technical specifications are available at www.forbo-flooring.co.uk/downloads
Please note: Digital representations may vary from the actual product. Please order a sample to see the full effect. Contact 0800 731 2369.

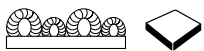


BREEAM ratings
Tessera Inline – Carpet Tiles (EN1307)

Commercial	Education	Health	Domestic	Retail (Durability)	Retail (Fashion)	Meets Ska criteria
A	A	A	A	A	A+	✓



Tessera Inline 878 | steam (foreground)
+ Layout 2125 | tonic + 2112 | frosting



The rich tapestry of landscape that forms the unique Scottish island of Arran has influenced artists for generations. The quality of light and the huge variety of natural colours create a complex palette that changes with each season. From the muted hues of autumn bracken to the vibrant tones of the summer heather, Arran has a beauty that inspires.

tessera® tiles are available with SOFTbac backing for better underfoot comfort and improved acoustic and thermal performance



1521 | golden sand LRV 21



1523 | dusty green LRV 13



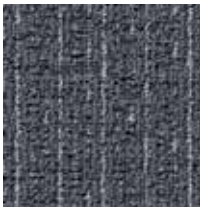
1518 | foggy day LRV 20



1519 | stone wall LRV 19



1522 | shallow water LRV 11



1512 | dove LRV 11



1520 | driftwood LRV 15



1525 | mountain mist LRV 13



1509 | noir LRV 2



1515 | latte LRV 10



1502 | Danube LRV 5

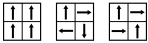


Tessera Arran 1521 | golden sand + 1519 | stone wall



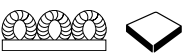
1524 | moss tone LRV 14

Description	Tufted multi-height loop pile carpet tile	
Dimensions	50cm x 50cm	
Total thickness	7.0 mm ± 10%	
Pile height	4.0mm ± 0.5mm	
Pile weight	950gsm ± 10%	
Yarn	100% Invista Antron® Lumena polyamide 6.6	
Dye method	100% solution dyed	
Collection size	12 (4m² per box)	
Application	EN 1307	Class 33
Impact sound reduction	ISO 10140-3	$\Delta L_W = 25$ dB
Recycled content	57%	
CE	EN 14041	
Reaction to fire	EN 13501-1	B ₁ -s1



BREEAM ratings
Tessera Arran – Carpet Tiles (EN1307)

Commercial	Education	Health	Domestic	Retail (Durability)	Retail (Fashion)	Meets Ska criteria
B	B	A	B	B	A+	✓



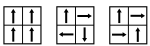
With over 10 million square metres already installed, Teviot is Tessera's most popular low level loop pile carpet tile and without doubt one of the best selling carpet tiles in the UK. Suitable for every type of commercial installation, Teviot can be specified with confidence throughout the building, wherever an attractive and particularly hardwearing modular floor covering is required.

Manufactured from 100% Aquafil polyamide, and boasting a high castor chair rating, it has the resilience and durability needed to contend with the heavy wheeled traffic conditions often found in busy office environments.

tessera® teviot
has sold over
10 million m²



Description	Tufted low loop pile carpet tile	
Dimensions	50cm x 50cm	
Total thickness	5.7mm ± 10%	
Pile height	2.8mm ± 0.5mm	
Pile weight	520gsm ± 10%	
Yarn	100% Aquafil polyamide 6	
Dye method	100% space dyed	
Collection size	48 (5m ² per box)	
Application	EN 1307	Class 33
Impact sound reduction	ISO 10140-3	ΔL _w = 23 dB
Recycled content	65%	
CE	EN 14041	
Reaction to fire	EN 13501-1	B _{fl} -s1



BREEAM ratings Tessera Teviot – Carpet Tiles (EN1307)						
Commercial	Education	Health	Domestic	Retail (Durability)	Retail (Fashion)	Meets Ska criteria
A	A	A+	A	A	A+	✓

tessera® create space 1

An exceptionally flexible range of 18 commercial colourways, Create Space 1 is suitable for any commercial space, large or small. Styled for today's interiors, Create Space 1 lends itself to single colourway installations, feature area designs and bespoke creative schemes.

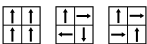


1813 | nickel LRV 19



1812 | iolite LRV 9

Description	Tufted low level loop pile carpet tile	
Dimensions	50cm x 50cm	
Total thickness	5.5mm ± 10%	
Pile height	2.7mm ± 0.5mm	
Pile weight	500gsm ± 10%	
Yarn	100% ECONYL®/Altochroma regenerated polyamide 6	
Dye method	100% solution dyed	
Collection size	18 (5m² per box)	
Application	EN 1307	Class 33
Impact sound reduction	ISO 140-8	$\Delta L_w = 21$ dB
Recycled content	70%	
CE	EN 14041	
Reaction to fire	EN 13501-1	B _{fl} -s1



1815 | hematite LRV 5



1804 | opal LRV 20



1803 | celeste LRV 13



1811 | cerulean LRV 9



1801 | feldspar LRV 7



1810 | ultramarine LRV 4



1808 | bistre LRV 4



1800 | ebonite LRV 3



1805 | peridot LRV 10



1816 | lithium LRV 10



1809 | persimmon LRV 10



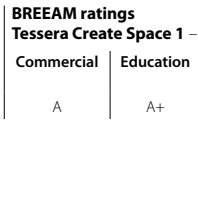
1814 | byzantine LRV 6



1817 | violetta LRV 5



1806 | goldstone LRV 20



1807 | tawny LRV 13



1806 | goldstone LRV 20



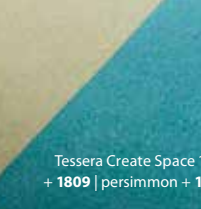
1805 | peridot LRV 10



1816 | lithium LRV 10



1809 | persimmon LRV 10



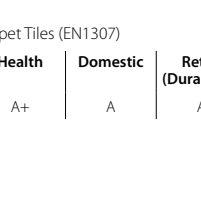
1814 | byzantine LRV 6



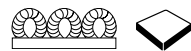
1817 | violetta LRV 5



1806 | goldstone LRV 20



1807 | tawny LRV 13



DID YOU KNOW
that Create Space 1 & 2
are produced using
up to
**100%
ECONYL**
regenerated yarn



BREEAM ratings Tessera Create Space 1 – Carpet Tiles (EN1307)						
Commercial	Education	Health	Domestic	Retail (Durability)	Retail (Fashion)	Meets Ska criteria
A	A+	A+	A	A	A+	✓

tessera® create space 2

Featuring a versatile geometric striped design and a contemporary palette of 15 colourways, Create Space 2 adds stylish and creative interest to any size flooring scheme. Create Space 2 carpet tiles are designed to provide the maximum flexibility in any installation as they can be fitted in a variety of styles including monolithic, tessellated, half-drop or non-directional, which reduces installation waste to less than 2%.



2806 | sandstone LRV 16



2807 | alder LRV 10



2804 | greige LRV 10



2801 | argent LRV 6



2808 | burnet LRV 6



2803 | purbeck LRV 7



2800 | licorice LRV 4



2813 | periwinkle LRV 8



2805 | olivaceous LRV 8



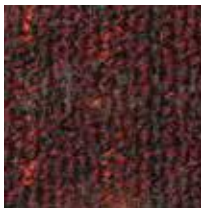
2812 | celadon LRV 12



2811 | quartz LRV 7



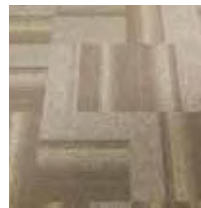
2802 | taverine LRV 10



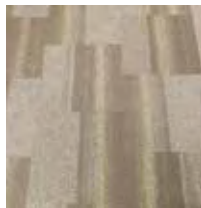
2810 | indigo LRV 4



2809 | cinnabar LRV 3



Non-directional



Half drop



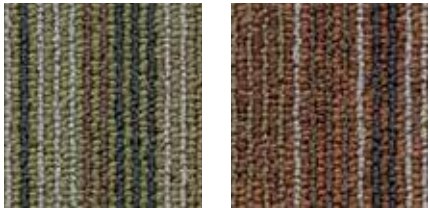
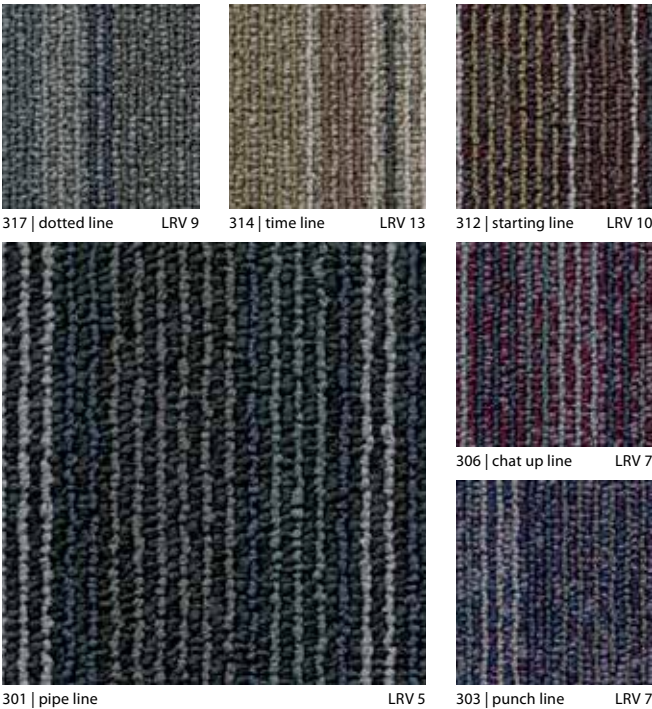
Tessellated



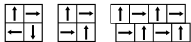
BREEAM ratings Tessera Create Space 2 – Carpet Tiles (EN1307)						
Commercial	Education	Health	Domestic	Retail (Durability)	Retail (Fashion)	Meets Ska criteria
A	A+	A+	A	A	A+	✓

tessera® barcode

Barcode challenges the uniformity and rigidity of conventional linear low level loop pile tiles and, with its confident bands of contrasting colours in varying widths, delivers a more eclectic and exuberant look that is right on trend for today's commercial environments.



311 double yellow line	LRV 14	315 branch line	LRV 11
318 goal line	LRV 11	309 party line	LRV 7
Description			
Tufted low level loop pile carpet tile			
Dimensions			
50cm x 50cm			
Total thickness			
6.0mm ± 10%			
Pile height			
3.0mm ± 0.5mm			
Pile weight			
580gsm ± 10%			
Yarn			
100% Aquafil polyamide 6			
Dye method			
100% solution dyed			
Collection size			
18 (4m² per box)			
Application			
EN 1307 Class 33			
Impact sound reduction			
ISO 140-8 ΔL _w = 22 dB			
Recycled content			
64%			
CE			
EN 14041			
Reaction to fire			
EN 13501-1 B _{f1} -s1			



307 | colour line LRV 7



305 | chorus line LRV 9



316 | picket line LRV 10



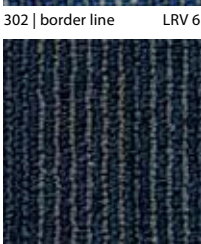
313 | fishing line LRV 11



302 | border line LRV 6



310 | story line LRV 7



304 | main line LRV 6



BREEAM ratings Tessera Barcode – Carpet Tiles (EN1307)						
Commercial	Education	Health	Domestic	Retail (Durability)	Retail (Fashion)	Meets Ska criteria
A	A	A+	A	A	A+	✓

tessera® diffusion

Diffusion reflects an evolution towards softer more organic geometry observed in nature. Inspired by crystalline structures, the fractal shapes fade in and out creating appealing contemporary floor spaces.



2003 | glacial flow LRV 27



2007 | perpetual motion LRV 34



2002 | paradigm shift LRV 19



2006 | passing place LRV 18



2001 | magnetic flux LRV 8



2005 | nomadic journey LRV 18



2000 | space quest LRV 4



2004 | pivotal moment LRV 8

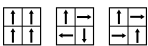


2015 | arctic voyage LRV 14



2008 | forest trail LRV 13

Description		Tufted multi-height loop pile carpet tile
Dimensions		50cm x 50cm
Total thickness		6.5mm ± 10%
Pile height		3.7mm ± 0.5mm
Pile weight		570gsm ± 10%
Yarn		Refresh™ by Universal Fibers™ 100% polyamide 6.6
Dye method		100% solution dyed
Collection size		10 (4m² per box)
Application		EN 1307 Class 33
Impact sound reduction		ISO 10140-3 ΔL _w = 22 dB
Recycled content		67%
CE		EN 14041
Reaction to fire		EN 13501-1 B _{f1} -s1



BREEAM ratings Tessera Diffusion – Carpet Tiles (EN1307)						
Commercial	Education	Health	Domestic	Retail (Durability)	Retail (Fashion)	Meets Ska criteria
A	A	A	A	A	A+	✓

RANDOM LAY. BATCHLESS CARPET TILES



Random lay

A random lay tile is cleverly designed so that it may be laid in any direction to produce a totally individual installation. Using this method also reduces installation waste to less than 2%.

Batchless

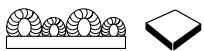
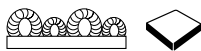
Different production consignments of 'batchless' tiles can be used together without the usual risk of visible batch variation. An additional benefit is that spare stocks do not have to be carried.

Tessera's random lay, batchless tile range has been made possible through the use of advanced CMC Infinity tufting technology.

tessera® mix



Tessera Mix 963 | obsidian



An innovative random lay, batchless carpet tile, Tessera Mix delivers a seamless installation appearance every time. Its soft geometric shapes cleverly disguise the tile edges and fitting direction and create its classic modern appearance.

Mix combines tone and shade within an angular framework through the controlled use of multi-pile height construction creating a distinctive, attractive and highly complementary flooring solution.

Designed for use in commercial, hospitality and public interiors, Mix is available in 15 contemporary colourways.

Random lay & batchless

Random lay for speed, reduced wastage and convenience

Mix is a multi-directional tile designed to be laid in a completely random fashion. Installation time is minimised as there are

no direction rules to follow. There is no need to check the pile direction as any tile of the correct size can be used, minimising fitting waste to less than 2%.

The overall Mix aesthetic is created at installation as geometric shapes are broken and joined randomly creating the final seamless design.

Batchless for economy and flexibility

Effective batchless Mix tiles can be ordered as required in quantities as low as a single box, removing the need to order and store spares.

For large installations there is no need to calculate batch sized areas, simply request the quantity required for the project thereby minimising the amount of batch waste.

Mix is ideal for offices and public spaces that may need to adapt in the future, as partitions are moved around, new tiles can be added as required prolonging the life cycle of the flooring.



952 | bone LRV 12



964 | stone LRV 9



961 | gravel LRV 10



953 | canyon LRV 9



955 | grit LRV 6



954 | woodash LRV 7



960 | iron LRV 10



963 | obsidian LRV 3



958 | lazuli LRV 5



968 | amethyst LRV 4



970 | jade LRV 7



969 | glacier LRV 7



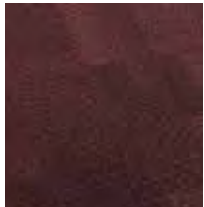
Description	Tufted multi-height loop pile carpet tile, Random lay, batchless	
Dimensions	50cm x 50cm	
Total thickness	5.9mm ± 10%	
Pile height	3.0mm ± 0.5mm	
Pile weight	650gsm ± 10%	
Yarn	100% Invista Antron® Lumena polyamide 6.6	
Dye method	100% solution dyed	
Collection size	15 (5m² per box)	
Application	EN 1307	Class 33
Impact sound reduction	ISO 10140-3	$\Delta L_w = 24$ dB
Recycled content	61%	
CE	EN 14041	
Reaction to fire	EN 13501-1	B _{fl} -s1



967 | husk LRV 9



966 | sahara LRV 6



965 | ruby LRV 4



BREEAM ratings
Tessera Mix – Carpet Tiles (EN1307)

Commercial	Education	Health	Domestic	Retail (Durability)	Retail (Fashion)	Meets Ska criteria
A	A	A	B	A	A+	✓

LOOP PILE PLANK CARPET TILES



Planks

Plank formats allow for maximum flexibility when creating stand out designs. Eyecatching floor designs can be created by using planks on their own or in combination with regular 50cm x 50cm carpet tiles.

tessera® in-touch



30

tessera® seagrass



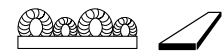
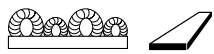
32

tessera® layout & outline planks



34

Tessera in-touch 3304 | collage + 3302 | scribe

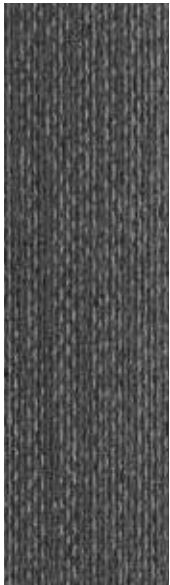
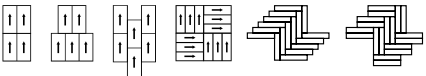


The current trend for flexibility in office environments suggests that if workspaces were more inviting and more relaxed in feel people would work better, integrate more and be happier in work; therefore spending more quality time there. This de-formalisation of the office brings a need for design that embraces the person and is calming, familiar and less structured. By taking inspiration from craft textiles and hand weaves, with Tessera In-touch, we have created a product that aims to reflect the gentle shift from work-life to life-work balance and promote the harmony between the two.



Tessera In-touch 3307 | crochet + 3306 | macrame

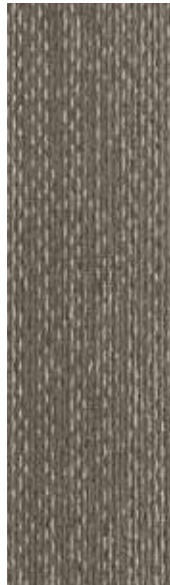
Description	Tufted multi-height loop pile carpet tile	
Dimensions	100cm x 25cm	
Total thickness	7,4mm ± 10%	
Pile height	4,2mm ± 0,5mm	
Pile weight	840gsm ± 10%	
Yarn	100% Invista Antron Lumena polyamide 6.6	
Dye method	100% solution dyed	
Collection size	10 (4m² per box)	
Application	EN 1307	Class 33
Impact sound reduction	ISO 10140-3	$\Delta L_w = 27$ dB
Recycled content	59%	
CE	EN 14041	
Reaction to fire	EN 13501-1	B _{fl} -s1



3302 | scribe LRV 10



3303 | calligraphy LRV 10



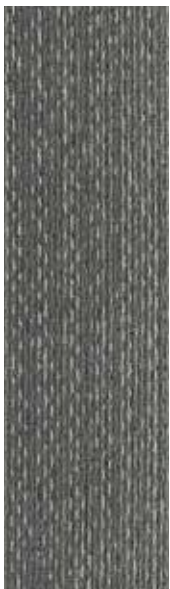
3306 | macrame LRV 13



3307 | crochet LRV 14



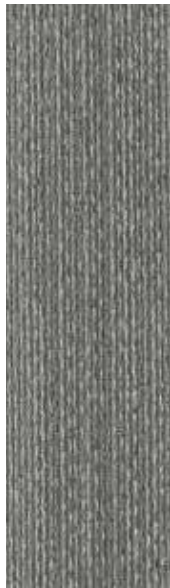
3301 | fresco LRV 13



3300 | watercolour LRV 15



Tessera In-touch 3300 | watercolour + 3301 | fresco



3304 | collage LRV 15



3305 | origami LRV 18



3308 | tapestry LRV 12



3309 | embroidery LRV 13



Tessera In-touch 3304 | collage + 3305 | origami



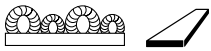
Tessera In-touch 3304 | collage + 3302 | scribe



BREEAM ratings

Tessera Mix – Carpet Tiles (EN1307)

Commercial	Education	Health	Domestic	Retail (Durability)	Retail (Fashion)	Meets Ska criteria
B	A	A	B	B	A+	✓



The linearity of Seagrass makes it possible to create striking floor designs when these planks are laid herringbone or in the more traditional half drop style. When laid alongside Allura Flex the difference in textures makes for a very striking interior.

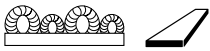
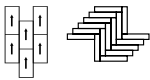


Tessera Seagrass 3203 | oyster + 3224 | dandelion + Allura Flex 61253 | oyster



Tessera Seagrass 3201 | indigo + 3200 | white + 3227 | teal

Description	Tufted multi-height loop pile carpet tile	
Dimensions	100cm x 20cm	
Total thickness	6.6mm ± 10%	
Pile height	3.8mm ± 0.5mm	
Pile weight	752gsm ± 10%	
Yarn	100% Invista Antron® Lumena polyamide 6.6	
Dye method	100% solution dyed	
Collection size	12 (3m² per box)	
Application	EN 1307	Class 33
Impact sound reduction	ISO 10140-3	$\Delta L_w = 28$ dB
Recycled content	60%	
CE	EN 14041	
Reaction to fire	EN 13501-1	B _{fl} -s1



3220 | silver LRV 18



3200 | white LRV 32



3221 | pewter LRV 12



Tessera Seagrass 3201 | indigo + 3200 | white + 3224 | dandelion + 3227 | teal + Allura Flex 61253 | oyster + 61255 | natural



3203 | oyster LRV 20



3223 | sandstone LRV 18



3226 | aqua LRV 14



3224 | dandelion LRV 20



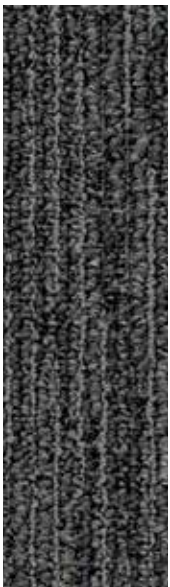
3225 | meadow LRV 13



3222 | weathered LRV 13



3201 | indigo LRV 10



3202 | black LRV 8



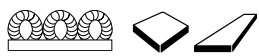
3227 | teal LRV 10



BREEAM ratings
Tessera Seagrass – Carpet Tiles (EN1307)

Commercial	Education	Health	Domestic	Retail (Durability)	Retail (Fashion)	Meets Ska criteria
A	A	A	B	A	A+	✓

tessera® layout & outline



Following on from the success of our Tessera Layout and Outline carpet tile collection, the Layout and Outline planks range also provides a contemporary and co-ordinated colour palette with the added benefit of a plank format.

We've introduced a total of 18 carpet tiles in a new 100cm x 25cm plank format, which provides the maximum flexibility for creating stunning floor designs. Available in 14 sophisticated and bright colourways, Layout planks are offered in a very versatile palette.

A contemporary two-colour striped pattern, Outline planks combine flexibility with design over 4 engaging colourways.

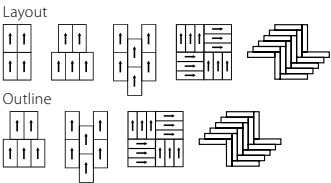
Contains 62% recycled content by weight.

All colours also available in tile format – see page 12.

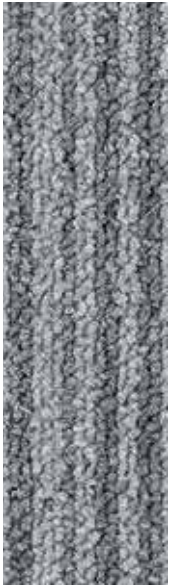


Tessera Layout 2119PL | maraschino + 2100PL | mono + 2104PL | alloy + Tessera Outline 3100PL | plasmatron

Description	Tufted low loop pile carpet tile	
Dimensions	100cm x 25cm	
Total thickness	5.8mm ± 10%	
Pile height	2.9mm ± 0.5mm	
Pile weight	580gsm ± 10%	
Yarn	100% polyamide 6	
Dye method	100% solution dyed	
Collection size	Layout 14 Outline 4 4.5m² per box	
Application	EN 1307	Class 33
Impact sound reduction	ISO 10140-3	$\Delta L_w = 27$ dB
Recycled content	62%	
CE	EN 14041	
Reaction to fire	EN 13501-1	B _{fl} -s1



Layout 2112PL | frosting LRV 28



Outline 3102PL | soda LRV 21



Layout 2107PL | brulee LRV 7



Layout 2104PL | alloy LRV 9



Layout 2108PL | calcium LRV 13



Layout 2103PL | balsamic LRV 13



Layout 2100PL | mono LRV 4



Outline 3100PL | plasmatron LRV 6



Outline 3101PL | colabottle LRV 9



Layout 2122PL | drench LRV 7



Layout 2120PL | apple LRV 20



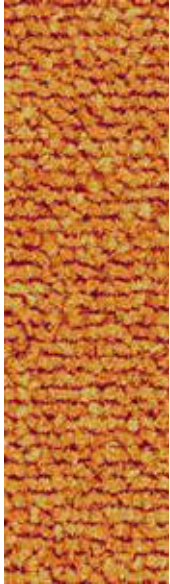
Layout 2123PL | candy LRV 23



Layout 2118PL | oceanis LRV 5



Layout 2129PL | menthe LRV 16



Layout 2131PL | mango LRV 18



Outline 3107PL | bubblegum LRV 6



Layout 2130PL | icepop LRV 12



Layout 2119PL | maraschino LRV 7



Tessera Layout 2100PL | mono + 2104PL | alloy + 2112PL | frosting + 2120PL | apple + Outline 3100PL | plasmatron



Tessera Layout 2112PL frosting + 2130PL icepop + 2118PL oceanis



BREEAM ratings
Tessera Layout & Outline Planks – Carpet Tiles (EN1307)

Commercial	Education	Health	Domestic	Retail (Durability)	Retail (Fashion)	Meets Ska criteria
A	A	A	A	A	A+	✓



CUT AND LOOP CARPET TILES

Cut and loop pile tiles feature a clever hybrid construction that offers all the robustness of a conventional loop pile product but with the superior aesthetics and more luxurious feel of a cut pile carpet tile.

Tessera offers cut and loop pile tiles in various aesthetic styles, suited to all types of office environments.



Tessera Alignment 222 | Galileo (foreground) 221 | gravity

tessera® alignment



38

tessera® contour



40



Alignment is a sophisticated and cleverly textured cut and loop carpet tile designed to complement the most contemporary commercial interiors. Multi-height loops give this distinctive floor covering a bold directional theme which is tempered by the introduction of intersecting random blocks of rich cut pile. The result is a highly effective broadloom appearance and a unique linear style.



Tessera Alignment 222 | Galileo (foreground) 221 | gravity



219 | equinox LRV 24



218 | luminosity LRV 22



213 | astral LRV 11



210 | climate LRV 8



239 | apollo LRV 2



215 | stellar LRV 6



214 | nocturn LRV 4



217 | meteorite LRV 3



209 | celcius LRV 8



208 | nucleus LRV 2



242 | hologram LRV 2



241 | north star LRV 2



243 | cosmic ray LRV 2



240 | wavelength LRV 2



Tessera Alignment 217 | meteorite + 213 | astral



202 | elixir LRV 4



204 | horizon LRV 4



220 | essence LRV 17



203 | cyclone LRV 2



222 | Galileo LRV 11



223 | solstice LRV 5



221 | gravity LRV 10



238 | terrestrial LRV 2

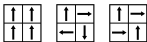


237 | sunspot LRV 2



244 | firestar LRV 2

Description	Tufted multi-height cut and loop pile carpet tile	
Dimensions	50cm x 50cm	
Total thickness	6.2mm ± 10%	
Pile height	3.5mm ± 0.5mm	
Pile weight	700gsm ± 10%	
Yarn	100% Invista Antron® Lumena polyamide 6.6	
Dye method	100% solution dyed	
Collection size	24 (4m² per box)	
Application	EN 1307	Class 33
Impact sound reduction	ISO 140-8	ΔL _w = 23 dB
Recycled content	61%	
CE	EN 14041	
Reaction to fire	EN 13501-1	B _{f1} -s1



BREEAM ratings

Tessera Alignment – Carpet Tiles (EN1307)

Commercial	Education	Health	Domestic	Retail (Durability)	Retail (Fashion)	Meets Ska criteria
B	A	A	B	B	A+	✓

tessera® contour

Influenced by lines in architecture and relieved by softer more natural elements, Contour offers a geometric framework across a palette of 13 naturally inspired colourways.

The cut and loop pile construction provides the gentle, striated form and with 67% recycled content, Contour also offers a low environmental impact. The yarn is solution dyed Refresh™ by Universal fibres ensuring premium quality and improved cleanability and longevity.



Tessera Contour 1908 | classic cloud



1904 | lava core

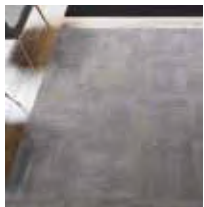
LRV 2



Non-directional



Monolithic



Tessellated



Half drop



1906 | rising ash

LRV 18



1903 | white spruce

LRV 32



1913 | fresh leaves

LRV 15



1912 | pastures new

LRV 16



1902 | neutral buff

LRV 15



1900 | painted bark

LRV 12



1910 | morning dew

LRV 13



1911 | himalayan salt

LRV 14



1908 | classic cloud

LRV 10



1905 | smoky quartz

LRV 6



1901 | volcanic brick

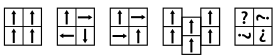
LRV 6



1907 | deep loch

LRV 4

Description	Tufted multi-height cut and loop pile carpet tile	
Dimensions	50cm x 50cm	
Total thickness	6.3mm ± 10%	
Pile height	3.5mm ± 0.5mm	
Pile weight (after shearing)	580gsm ± 10%	
Yarn	Refresh™ by Universal Fibers™ 100% polyamide 6.6	
Dye method	100% solution dyed	
Collection size	13 (4m² per box)	
Application	EN 1307	Class 33
Impact sound reduction	ISO 10140-3	ΔL _W = 23 dB
Recycled content	67%	
CE	EN 14041	
Reaction to fire	EN 13501-1	B _{s1} -s1



BREEAM ratings
Tessera Contour – Carpet Tiles (EN1307)

Commercial	Education	Health	Domestic	Retail (Durability)	Retail (Fashion)	Meets Ska criteria
A	A	A	A	A	A+	✓



PROJECT:
University of Cumbria

LOCATION:
Cumbria

COMMISSIONED BY: **University of Cumbria**

FLOORING MATERIAL:
Tessera Cloudscape **3413** | monsoon cloud
+ **3400** | nimbus grey

See page 6 for the full Tessera Cloudscape range.



PROJECT:
New Bridewell Student Accommodation

LOCATION:
Bristol

DESIGNER: **Jasper Sanders and Partners**

FLOORING MATERIAL:
Tessera Layout and Outline **2117** | surf + **2125** | tonic + **2015** | aniseed + **2128** | custard

See page 12 for the full Layout & Outline range.



PROJECT:
Zebra Technologies

LOCATION:
Bourne End, Buckinghamshire

DESIGNER: **Oktra**

FLOORING MATERIAL: Tessera Layout & Outline **2117** | surf + **2125** | tonic + Tessera Clarity **7910115** | Peacock + Allura Flex **60187** | natural weathered oak + **60387** | charcoal solid oak

See page 12 for the full Layout & Outline range.



Office - Showroom

T: +90 212 274 44 22 | +90 212 274 42 89

E: info@anilzemin.com | bilgi@anilzemin.com

Web: www.anilzemin.com

A: Vadi İstanbul Bulvar 2A Ofis | Ayazağa Mah.

Cendere Cad. No: 109 / I Daire: 15-16 Sarıyer / İST

logistics 1

T: +90 212 229 44 38 | E: info@anilzemin.com |

bilgi@anilzemin.com | www.anilzemin.com A:

Poligon Mah. Sevim Sok. No:10/B İstinye /

Sarıyer / İstanbul

logistics 2

Hellmann Worldwide Logistics

Samples:

Tel: 0212 274 44 22

E mail: info@anilzemin.com



Find us on

