



XTREME 797M



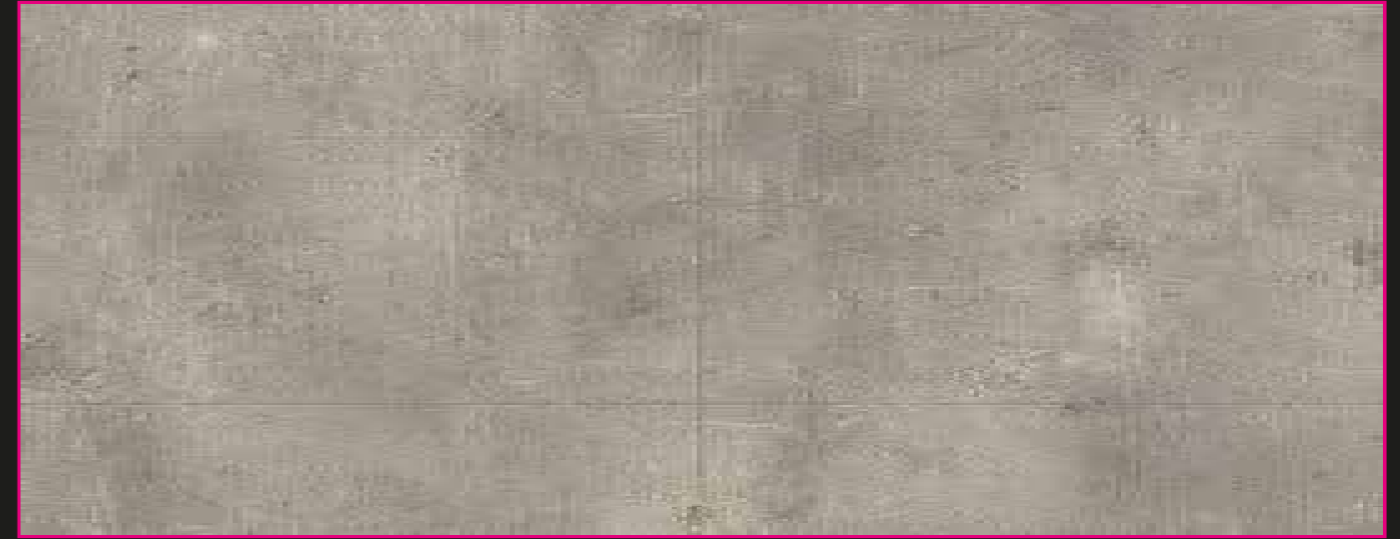
XTREME 639S



XTREME 939L



AMBIENT GOLDEN OAK 016 M



AQUALINE ZINC 616M



AQUALINE ZINC 679M



PROJECT VINLY

Product Information

Product Information			XTREME	AQUALINE	AMBIENT
Usage classification	EN ISO 10874 EN 685		42	23 - 34 - 43	23 - 34 - 42
Wear layer	EN ISO 24340 EN 429		0,70 mm	0,70 mm	0,70 mm
Total thickness	EN ISO 24346 EN 428		2,00 mm	2,20 mm	2,50 mm
Total weight	EN ISO 23997 EN 430		2800 g/m ²	2780 g/m ²	2600 g/m ²
Standard widths	EN ISO 24341 EN 426		2 - 4 m	2 - 3 m	2 - 3 - 4 m
Standard length	EN ISO 24341 EN 426		25 m	25 m	25 m

Technical Information

Light stability	EN ISO 105 B02		≥ 6	≥ 6/7	≥ 6
Dimensional stability	EN ISO 23999 EN 434		≤ 0,40 %	≤ 0,40 %	≤ 0,40 %
Underfloor heating	EN 12667		Suitable	Suitable	Suitable
Residual indentation	EN ISO 24343-2 EN 433		≤ 0,35 mm	≤ 0,35 mm	≤ 0,10 mm
Impact sound	EN ISO 717/2		Δ Lw 6 dB	Bw	Δ Lw 13 dB
Castor chair	EN ISO 4918 EN 425		Suitable	Suitable	Suitable
Reaction to fire	EN 13501-1		Bfl/S1	Bfl/S1	Bfl/S1
Slip resistance	EN 13893		R10	R10	R10

