
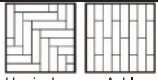


Product:	Moonlight*
Reference picture:	
Fiber:	100% Polypropylene
Structure:	Loop pile Multi-Level loop
Gauge:	1/12"
Stitches:	10 per inch
Tufts/sqm:	186000
Average Pile Height:	4.0+/-0.5mm
Total Height:	6.3+/-0.5mm
Pile Weight:	650g/sqm
Total Weight:	3340g/sqm± 10%
Tile Size:	25*100cm
Backing:	E+Bac (Bitumen)
Approved Installation Method:	 Herringbone Ashlar
Flammability:	ASTM E 645: ≥ 0.22 watts/cm2 Class II
Smoke Density:	ASTM E 662: ≤ 450 DMC
Dimensional Stability	AACHEN: ≤ 0.2 %
Tuft Bind:	ASTM D 1335: ≥ 8.0 lbs
Delamination:	ASTM D 3936: ≥ 3.0lb/in
Static Propensity	AATCC 134: ≤ 3.5kV
Colorfastness to Light	AATCC 16E: ≥ 4-5
Colorfastness to Water	AATCC 107: ≥ 4-5
Colorfastness to Crocking	AATCC 165: ≥ 4-5

* Manufactured by China.



📍 Vadi İstanbul Bulvar 2A Ofis I Ayazağa Mah.
Azerbaycan Cad. No: 3 / I Daire: 15-16 Sarıyer / İSTANBUL
☎️ +90 212 274 44 22 • +90 274 42 89 • +90 212 274 42 90
☎️ +90 212 274 42 80
☎️ +90 530 523 52 73
🌐 www.anilzemin.com
✉️ info@anilzemin.com



İ
S
T
A
N
B
U
L

S
T
O
K

Moonlight
Carpet
Planks

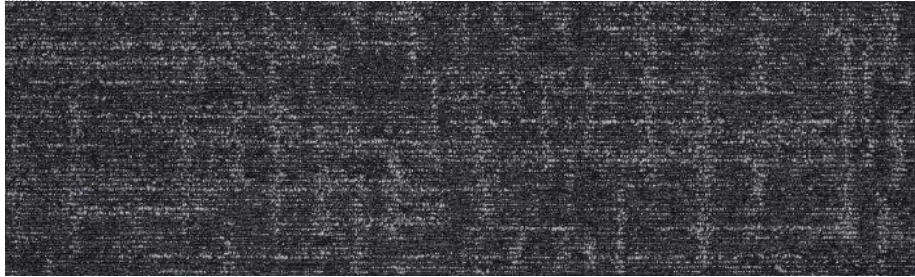
heavy
contract
carpet planks



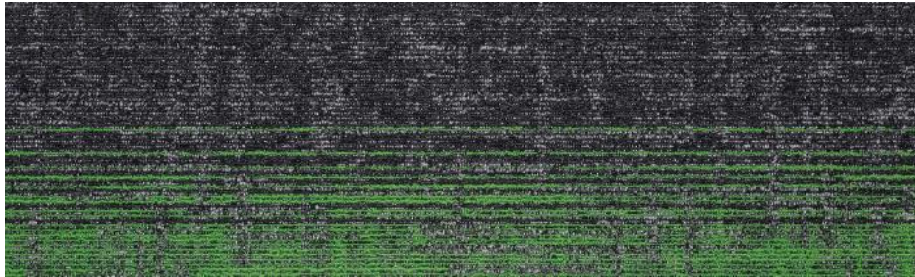
AZM CARPETINTERNATIONAL
Moonlight Carpet Planks



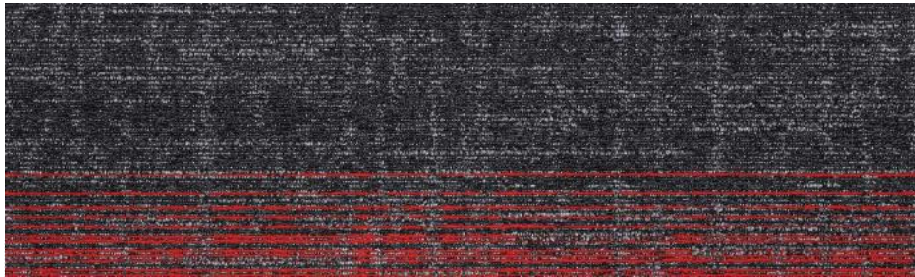
"Offering you the ideal solutions
from entrance to exit"



Moonlight 01



Moonlight 02



Moonlight 03



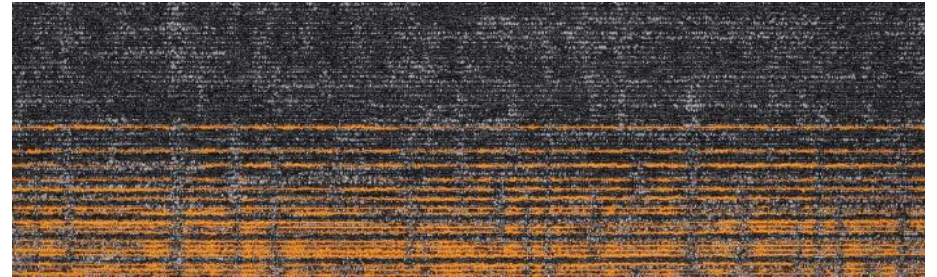
i
S
T
A
N
B
U
L

S
T
O
K

Moonlight
Planks



Moonlight 05



Moonlight 07



Moonlight 08