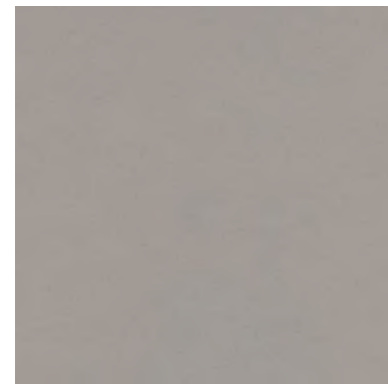
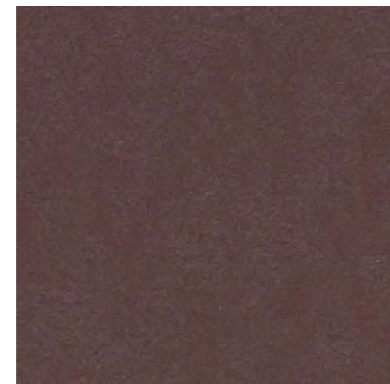


Walton

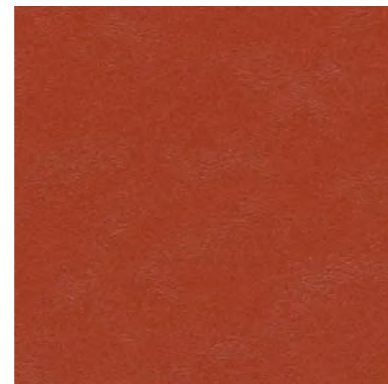
≤32 m 2 m



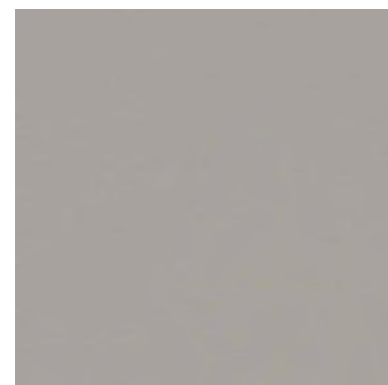
3367 | allow | walton



3353 | eggplant purple | walton



3352 | berlin red | walton



3371 | uni cement | walton



3430 | salsa verde | splash



Real

≤32 m 2 m



2629 | eiger | real



2621 | dove grey | real



3032 | mist grey | real



3137 | slate grey | real



3136 | concrete | real



3038 | caribbean | real



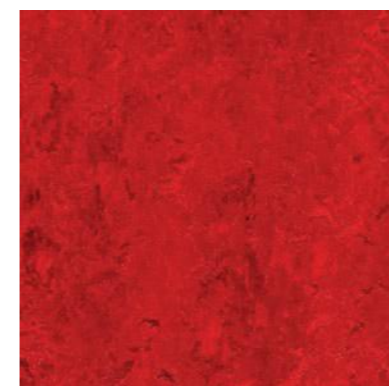
3174 | sahara | real



3847 | golden saffron | real



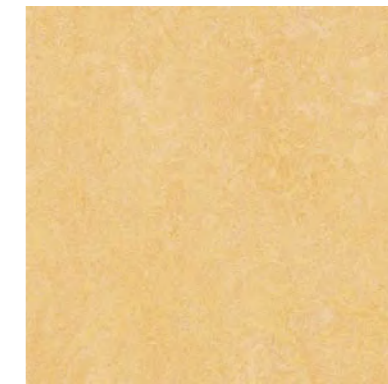
3055 | fresco blue | real



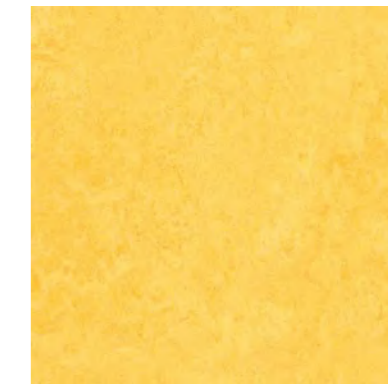
3127 | bleecker street | real

Fresco

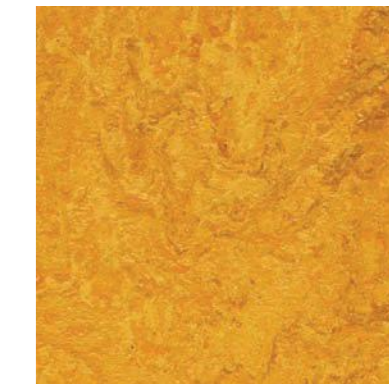
≤32 m 2 m



3846 | natural corn | fresco



3251 | lemon zest | fresco



3125 | golden sunset | fresco



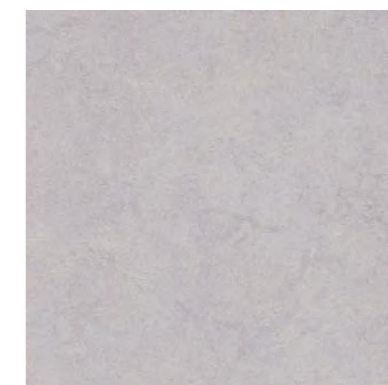
3828 | blue heaven | fresco



3891 | sage | fresco



3874 | walnut | fresco



3883 | moonstone | fresco



3889 | cinder | fresco



3866 | eternity | fresco



3139 | lava | fresco



3872 | volcanic ash | fresco



2939 | black | fresco

Technical specifications

Marmoleum meets the requirements of EN-ISO 24011



		Marmoleum sheet Walton	Marmoleum sheet Real/Fresco/ Splash
	Total thickness	EN-ISO 24346 2.5 mm	2.5 mm
	Surface finish	Topshield ²	Topshield ²
	Domestic use	EN-ISO 10874 Class 23	Class 23
	Commercial use	EN-ISO 10874 Class 34	Class 34
	Light Industrial use	EN-ISO 10874 Class 43	Class 43
	Collection size	77 colours	90 colours
	Roll width	EN-ISO 24341 2.00 m	2.00 m
	Roll length	EN-ISO 24341 ≤ 32 m	≤ 33 m
	Total weight Typical value	EN-ISO 23997 2900 g/m ²	2900 g/m ²
	Residual indentation Typical value	EN-ISO 24343-1 ≤ 0.15 mm ~0.08 mm	≤ 0.15 mm ~0.08 mm
	Castor chair continuous use	ISO 4918/ EN 425 Pass	Pass
	Light fastness	EN-ISO 105-B02 ≥ 6	≥ 6
	Flexibility	EN-ISO 24344 ø 40 mm	ø 40 mm
	Resistance to chemicals	EN-ISO 26987	Resistant to diluted acids, oils, fats and to the conventional solvents. Not resistant to prolonged exposure to alkalis.
	Bacteriostatic properties*	Marmoleum has natural bacteriostatic properties which are confirmed by independent laboratories, even against the bacteria MRSA.	
	Cigarette resistance	EN 1399	There is no melting of the surface by cigarettes. Marks left on Marmoleum as a result of stubbed-out cigarettes can be removed.
	Slip resistance	DIN 51130 R9	R9
	Electrical resistance Marmoleum Ohmex	EN 1081	1·10 ⁹ < R1 < 1·10 ⁸ Ω static dissipative
	Acoustical impact sound reduction	EN-ISO 717-2	≤ 6 dB
	Life Cycle Assessment	LCA is the foundation for securing the lowest environmental impact.	
	Creating better environments		
	CO ₂ neutral	Marmoleum 2.5 mm are produced CO ₂ neutral.**	
	renewable electricity	Marmoleum is manufactured using 100% electricity from renewable sources.	
	natural materials (e.g. linseed oil, jute, tree resin, wood flour, limestone)	Marmoleum is made of 94-98% natural materials. Marmoleum contains PEFC certified wood flour.	
	recycled content	Marmoleum is free of PVC, PET, synthetic rubber and plasticizers. Marmoleum contains recycled content.	
	Application on underfloor heating	yes	yes

Marmoleum meets the requirements of EN 14041

		0100201_DoP_306	0100201_DoP_306
	Product code	EN 14041	EN 14041
	Reaction to fire	EN 13501-1 C _s -s1, G, CS***	C _s -s1, G, CS
	Slip resistance	EN 13893 μ ≥ 0.30	μ ≥ 0.30
	Body voltage	EN 1815 ≤ 2 kV	≤ 2 kV
	Thermal conductivity	EN 12524 0.17 W/m·K	0.17 W/m·K
	Indoor Air Emissions: TVOC at 28 days	EN 16516 < 0,05 mg/m ³	< 0,05 mg/m ³
	Content of specific dangerous substances	EN 14041 Compliant, not actively added.	Compliant, not actively added.

* Marmoleum sheet can be installed nett fit, or with a welding rod in the seam. Both are proven hygienic solutions.

** For verification and details please consult our Marmoleum EPD.

*** Marmoleum 2.5 mm is available in reaction to fire classification B_{s1}-s1, G, CS. Available on request, contact sales support for leadtime.

All Forbo Flooring Systems' sales organisations worldwide have a certified Quality Management System in accordance with ISO 9001.

All Forbo Flooring Systems' manufacturing operations have a certified Environmental Management System in accordance with ISO 14001.

The Life Cycle Assessment (LCA) of Forbo Flooring Systems' products is documented in individual Environmental Product Declarations (EPD's) which can be found on all of our websites.



Bu ürünler Forbo'nun Hollanda fabrikasında üretilmektedir.

Vadi İstanbul Bulvar 2A Of is | Ayazağa Mah. Azerbaycan Cad. No: 3/1

Daire: 15-16 Sarıyer / İSTANBUL

+90 212 274 44 22 • +90 274 42 89 • +90 212 274 42 90

+90 212 274 42 80

+90 530 523 52 73

www.anilzemin.com

info@anilzemin.com

Forbo

FLOORING SYSTEMS

creating better environments



AZM PEARL LINONATURA 2.5 mm