

Welding of corners to the skirting instructions



Due to the heating and consequent deformation, it is necessary to verify that the external part is straight



Make the needed corrections



Now the external part is ready to be joint to the skirting.



Fit in the skirting between the corners.

Welding instruction



Heat the joint



Groove the joint



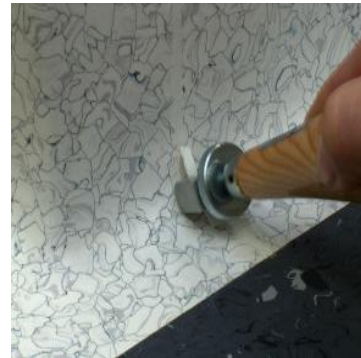
Protect the parts that don't need welding with adhesive tape.



Weld with appropriate PVC weld (hot air 300/350 °C)



Once applied roughly remove the excessive weld.



Once cooled down finish the welding to end with a smooth joint.